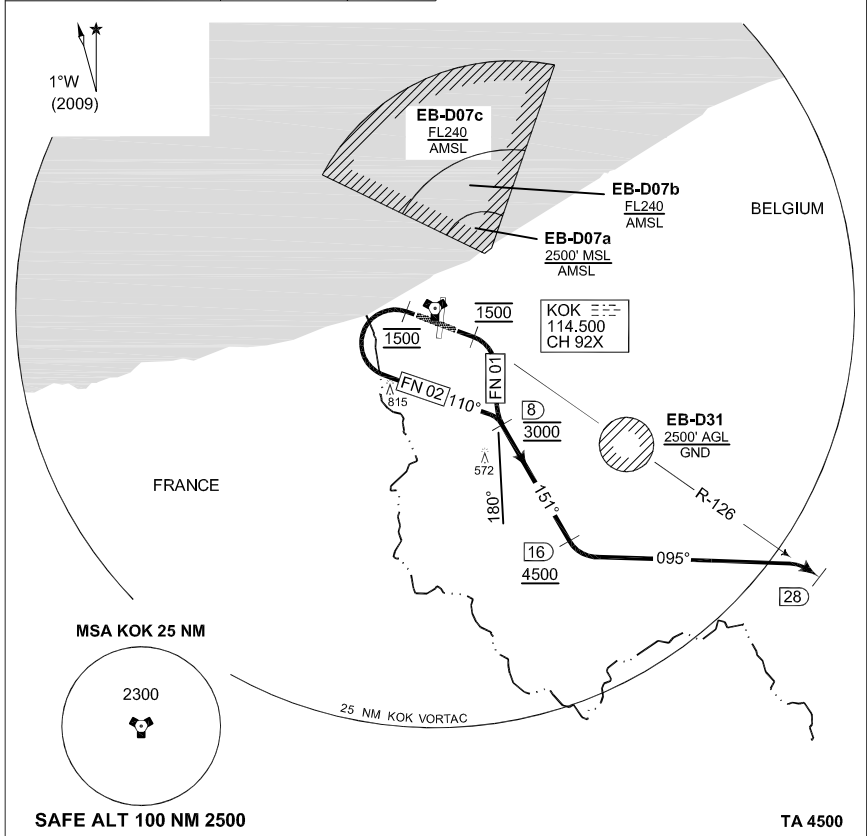


**TERPS
INSTRUMENT DEPARTURE CHART**

**FN 01 - 02
KOKSIJDE (EBFN)**

KOKSIJDE GND 308.775	KOKSIJDE TWR 231.800 122.100	KOKSIJDE APP 235.050 122.500	BELGA INFO 373.550 129.325
DVORTAC KOK 114.500 CH 92	AD ELEV 20		



SAFE ALT 100 NM 2500 **TA 4500**

FN 01 (RWY 11)	<ul style="list-style-type: none"> - Climb straight ahead, to 1500 ft. - Turn right, track 180° to intercept R-151 outbound KOK VORTAC. - Pass 8 DME / R-151, 3000 ft, start climb as instructed. - Contact BELGA RADAR, when passing 4500 ft. - At 16 DME, above 4500 ft turn left heading 095°. - Intercept R-126 outbound KOK.
-------------------	---

FN 02 (RWY 29)	<ul style="list-style-type: none"> - Climb straight ahead, to 1500 ft. - Turn left, track 110° to intercept R-151 outbound KOK VORTAC. - Pass 8 DME / R-151, 3000 ft, start climb as instructed. - Contact BELGA RADAR, when passing 4500 ft. - At 16 DME, above 4500 ft turn left heading 095°. - Intercept R-126 outbound KOK.
-------------------	--

CHANGES: EDITORIAL

BEL DEFENCE, AIR COMPONENT 26 AUG 10 - D.001