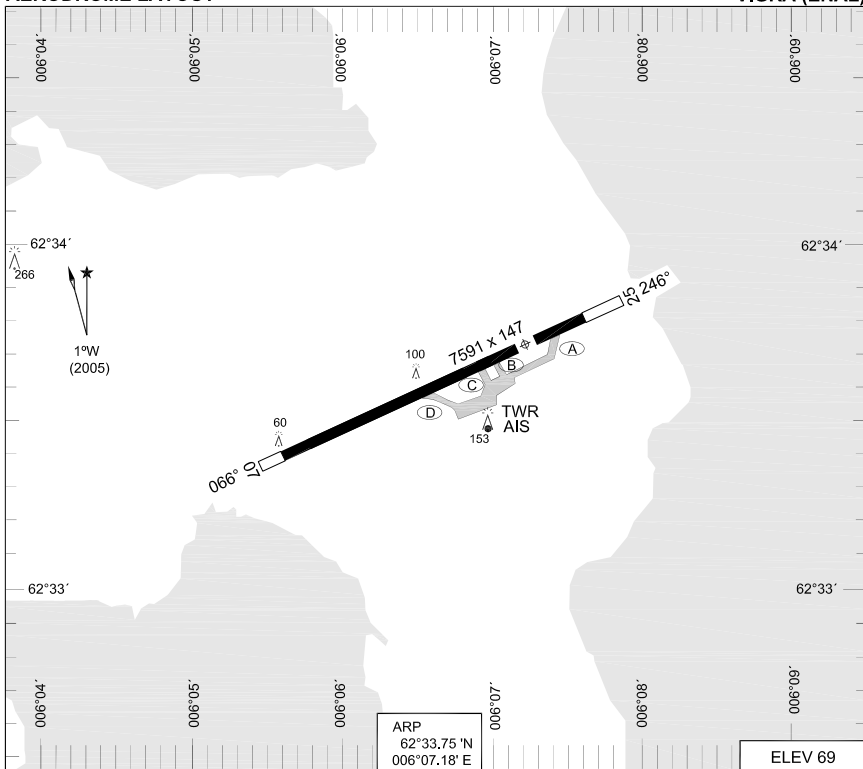


**TERPS  
AERODROME LAYOUT**

**VIGRA (ENAL)**



RWY	PCN	TORA	ASDA	TODA	LDA	ASI	ALS	TDZE	THR PSN
07	40 F/C/X/U	7099	7099	7591	6607	P 3.0°	(N)	67	62°33.39' N - 006°05.55' E
25	40 F/C/X/U	7247	7247	7739	6489	P 3.0°	(X)	69	62°33.84' N - 006°07.59' E

**● CIRCLING NORTH OF AERODROME ONLY**

ATIS 128.650  
VIGRA TWR 118.100 119.850

	RWY	GS	TCH	OTCH	RPI	CAT	MINIMA
● CIR	07/25					CD E	760 - 4.8 693 (700-4.8) 1940 - 4.8 1873 (1900-4.8)

**AERODROME LAYOUT**

**VIGRA (ENAL)**

**TERPS  
INSTRUMENT APPROACH CHART**

AD ELEV 69

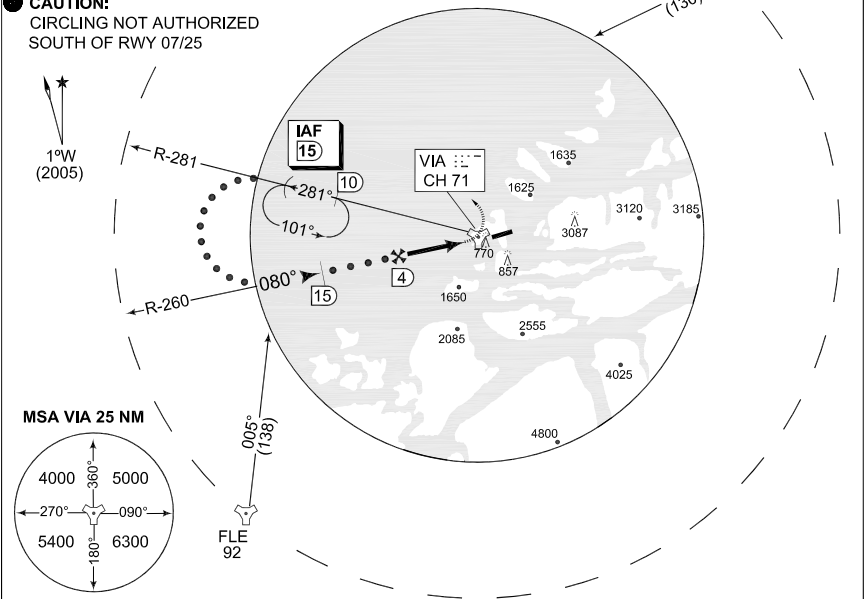
**HI-TACAN A  
VIGRA (ENAL)**

ATIS 128.650					VIGRA TOWER 119.850 118.100		
TACAN VIA CH 71	APP COURSE 080°	FAF ALT 1940	MDA <b>SEE CAT</b>	AD ELEV 69			

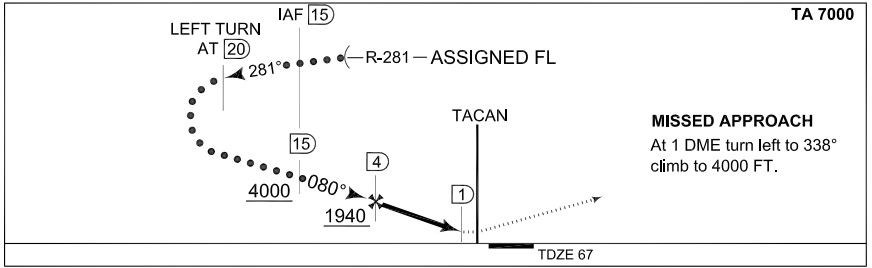
**CAUTION:**  
RADIOMAST 770 FT  
1 NM SOUTH OF TACAN

● **CAUTION:**  
CIRCLING NOT AUTHORIZED  
SOUTH OF RWY 07/25

ORL 51 IAF  
62°35.60' N  
005°30.40' E



**EMERG SAFE ALT 100 NM 11000**



CATEGORY	C	D	E
● CIRCLING	760 - 4.8 693 (700 - 4.8)		1940 - 4.8 1873 (1900 - 4.8)

CHANGES: EDITORIAL

RND/AF 06 MAY 2010

**HI-TACAN A**

62°33.75' N  
006°07.18' E

**VIGRA (ENAL)**