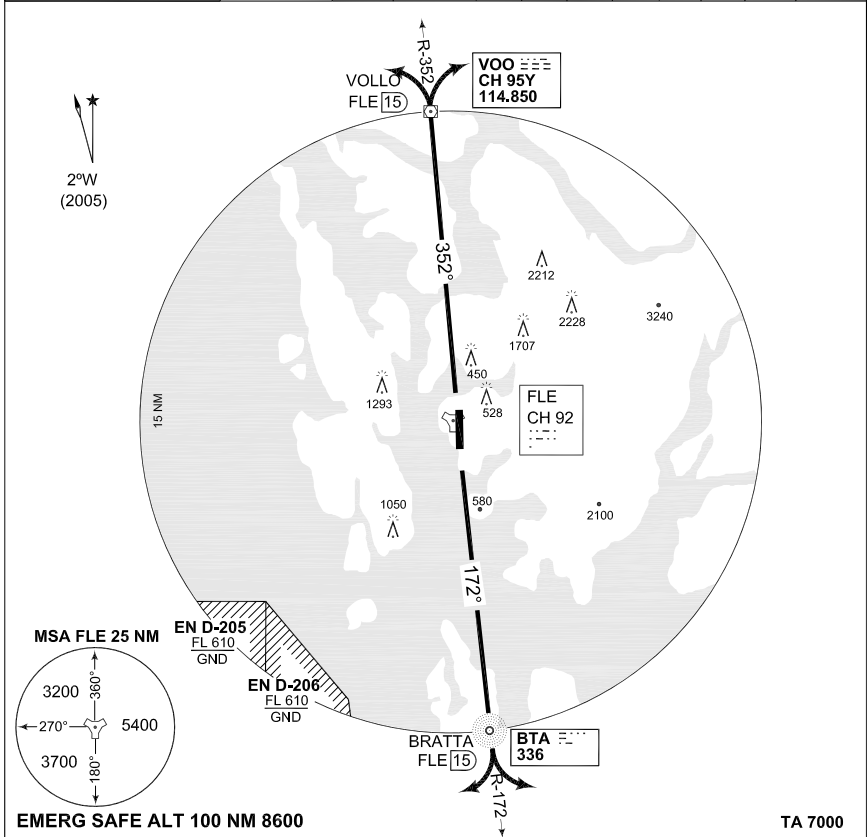


**TERPS  
INSTRUMENT DEPARTURE CHART**

**BRATTA 1C/VOLLO 1D DEPARTURE  
FLESLAND (ENBR)**

ATIS 125.250		FLESLAND GND 121.900		FLESLAND TWR 119.100				FLESLAND RADAR 121.000				
STAVANGER CONTROL 124.700 363.650		AD ELEV <b>165</b>	RWY 17/35	Knots V/V (fpm)	60	120	180	240	300	360	to	reason
					300	600	900	1200	1500	1800	4000	ATC



BRATTA 1C (RWY 17)	Climb on FLE R-172 to 15 DME (BTA), then as instructed by ATC Climb to 4000 ft
VOLLO 1D (RWY 35)	Climb on FLE R-352 to 15 DME (VOO), then as instructed by ATC Climb to 4000 ft

CONTACT FLESLAND RADAR 121.000 WHEN AIRBORNE.

CHANGES: AD NAME

RNOAF 26 AUG 2010