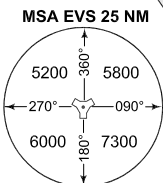
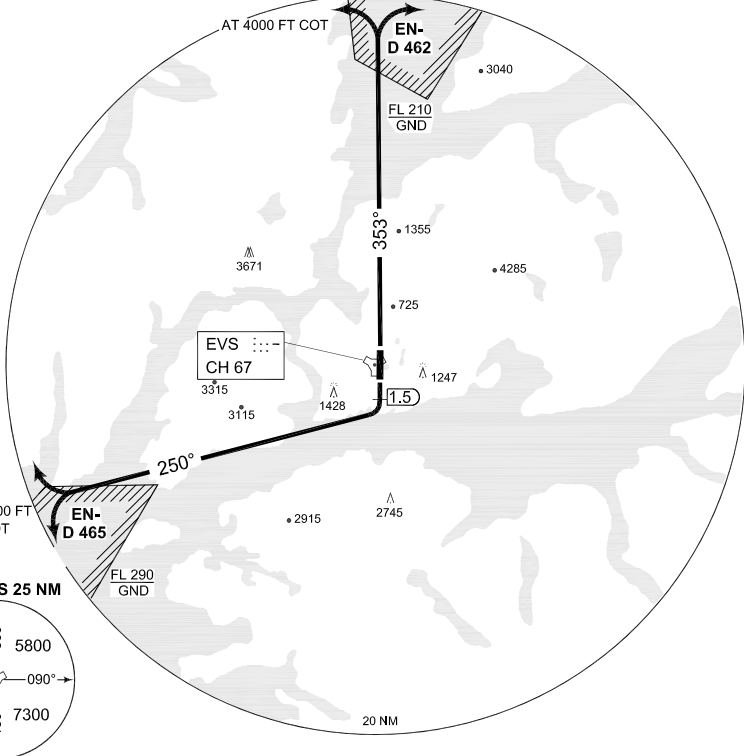


**TERPS  
INSTRUMENT DEPARTURE CHART**

**SID RWY 17/35  
EVENES (ENEV)**

ATIS 126.025	118.000	EVENES TWR 120.100 369.325		BODOE CONTROL 126.450 278.050							
	AD ELEV <b>84</b>	RWY	Knots	60	120	180	240	300	360	to	reason
		17	V/V (fpm)	570	1140	1710	2280	2850	3420	1500	
			V/V (fpm)	440	880	1320	1760	2200	2640	4000	terrain
		35	V/V (fpm)	350	700	1050	1400	1750	2100	1500	



**EMERG SAFE ALT 100 NM 9300**

**TA 7000**

RWY 17	- Climb on 175° to 1.5 DME EVS, turn right to 250°, reaching 4000 ft, climb on track (COT).
RWY 35	- Climb on 353°. Within 21 DME EVS, reaching 4000 ft, climb on track (COT).

CHANGES: AD NAME

RNPAF 26 AUG 2010

**SID RWY 17/35**

68°29.33' N  
016°40.70' E

**EVENES (ENEV)**