

**PANS-OPS
INSTRUMENT APPROACH CHART**

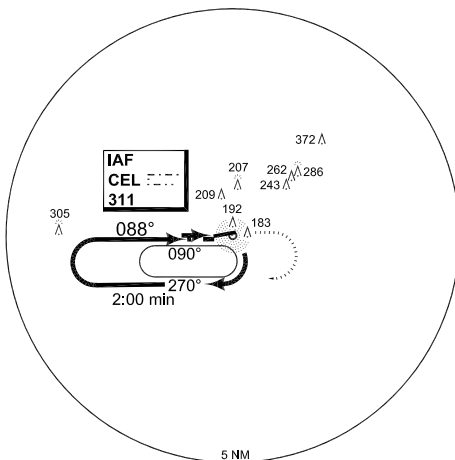
AD ELEV 129

**COPTER NDB 088
CELLE (ETHC)**

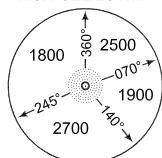
CELLE TWR			CELLE RADAR		BREMEN RADAR		
281.900	257.800	122.100	283.925	130.500	131.325		
NDB CEL 311		APP COURSE 088°	Descent GR		MDA 600	TDZE 129	

NOTE:
a) Radar monitored only

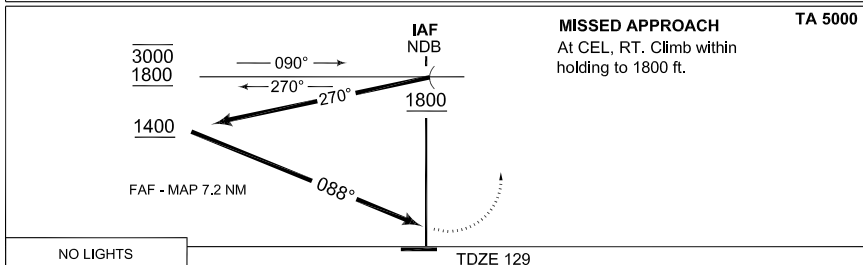
IAF
52°35.38'N
010°01.77'E



MSA CEL 25 NM



EMERG SAFE ALT 100 NM 6100



NO LIGHTS	COPTER
CATEGORY	COPTER
	MINIMA ACCORDING TO STANAG 3759
H-088°	600 - 0.8 471 (500-0.8)

CHANGE: ALS (59/10)

AFSBw 26 AUG 2010

COPTER NDB 088

52°35.47'N
010°01.33'E

CELLE (ETHC)

**PANS-OPS
INSTRUMENT APPROACH CHART**

AD ELEV 129

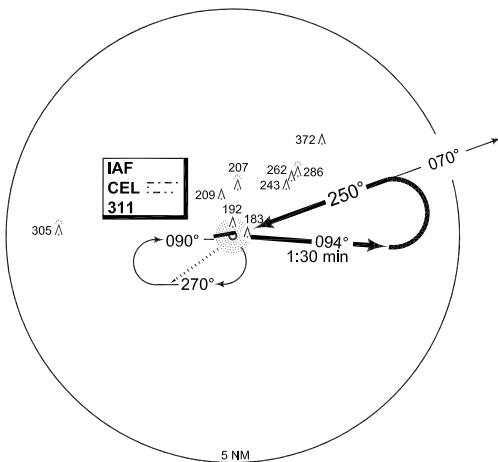
**COPTER NDB 250
CELLE (ETHC)**

CELLE TWR 281.900 257.800 122.100			CELLE RADAR 283.925 130.500		BREMEN RADAR 131.325			
NDB CEL 311	APP COURSE 250°		Descent GR	MDA 550	TDZE 128	ALS-Length 2953	LDA 6007	

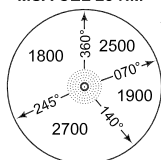
CAUTION:

a) No practice approach RWY 26

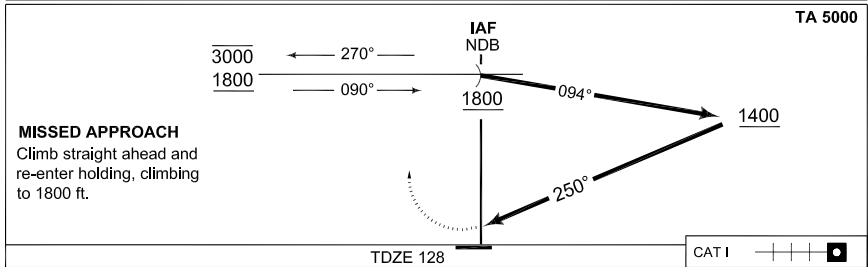
IAF
52°35.38'N
010°01.77'E



MSA CEL 25 NM



EMERG SAFE ALT 100 NM 6100



CATEGORY	COPTER
	MINIMA ACCORDING TO STANAG 3759
H-250°	550 - 0.4 422 (500-0.4/0.8)

CHANGE: ALS (59/10)

AFSBw 26 AUG 2010

COPTER NDB 250

52°35.47'N
010°01.33'E

CELLE (ETHC)