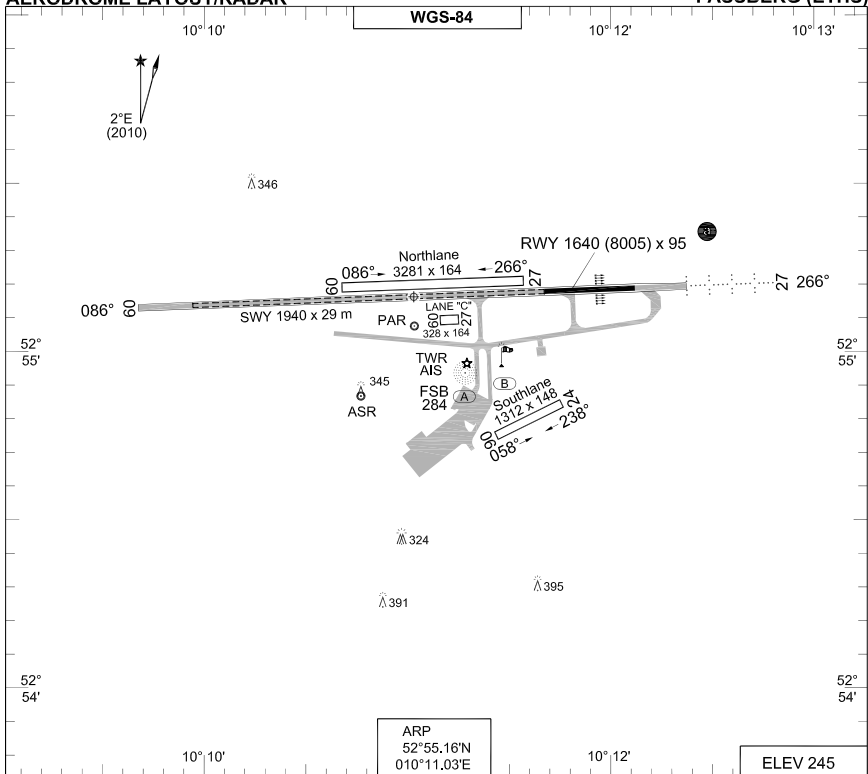


**TERPS
AERODROME LAYOUT/RADAR**

FASSBERG (ETHS)



RWY	LCN	TORA	ASDA	TODA	LDA	ASI	ALS-Length	TDZE	THR PSN
09	63	1640	1640	1640	1640	N/A		245	52°55.17'N 010°11.67'E
● 27	63	1640 (8005)	8005	8005	1640 (8005)	P 3.0°	1968	245	52°55.19'N 010°12.12'E

● After prior approval (24 hr PPR) use of total length (8005) of RWY 27 In exceptional cases possible.

FASSBERG TWR 338.075 141.700
 FASSBERG RADAR 379.075 278.325 122.425 SSR 7020 - 7027

	RWY	GS	TCH	OTCH	RPI	CAT	MINIMA
	PAR	27	3.0°	38		750 ABCDE	445 - 0.8 200 (200-0.8/1.2)
	269		3.0°			750 COPTER	345 - 0.4 100 (100-0.4/0.8)
	SRA	27				AB C DE COPTER	680 - 0.8 435 (500-0.8/1.6) 680 - 1.2 435 (500-1.2/2.0) 680 - 1.6 435 (500-1.6/2.4)
	269						680 - 0.4 435 (500-0.4/0.8)

CHANGE: DECLARED DISTANCES (17.44/10)

AFSBw 06 MAY 2010

AERODROME LAYOUT/RADAR

FASSBERG (ETHS)

**MIPS
INSTRUMENT APPROACH CHART**

AD ELEV 245

**COPTER NDB 015
FASSBERG (ETHS)**

BREMEN RADAR 259.725 131.325		FASSBERG RADAR 379.075 122.425		FASSBERG TWR 338.075 141.700			
NDB CEL 311 / FSB 284	APP COURSE 015°	FAF ALT	Descent GR	MDA 750	TDZE	LDA 1640	

NOTE:

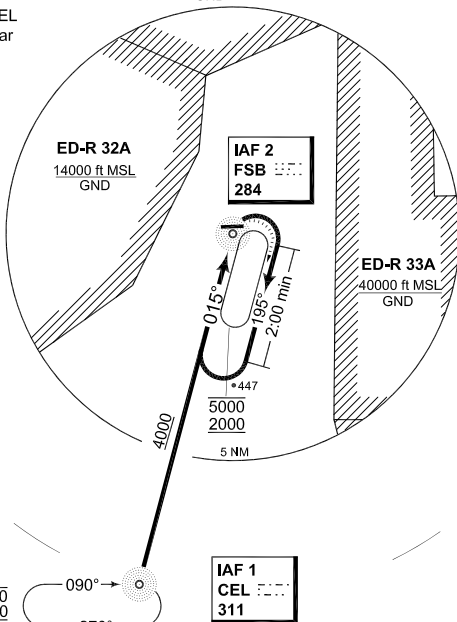
- a) RADAR MONITORED ONLY
- b) Enter FSB holding only via CEL NDB unless vectored by Radar

ED-R 32B

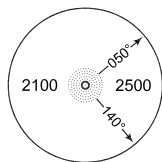
10500 ft MSL
GND

IAF 1 CEL
52°35.38'N
010°01.77'E

IAF 2 FSB
52°54.94'N
010°11.28'E

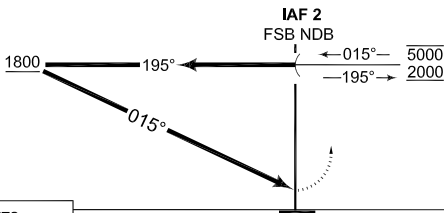


MSA FSB 25 NM



EMERG SAFE ALT 100 NM 6100

TA 5000



MISSED APPROACH

Turn right and climb within FSB holding to 2000 ft MSL.

NO LIGHTS

CATEGORY	COPTER
H-015°	750 - 0.8 505 (600-0.8)

CHANGE: EDITORIAL (17/10)

AFSBw 06 MAY 2010

COPTER NDB 015

52°55.16'N
010°11.03'E

FASSBERG (ETHS)