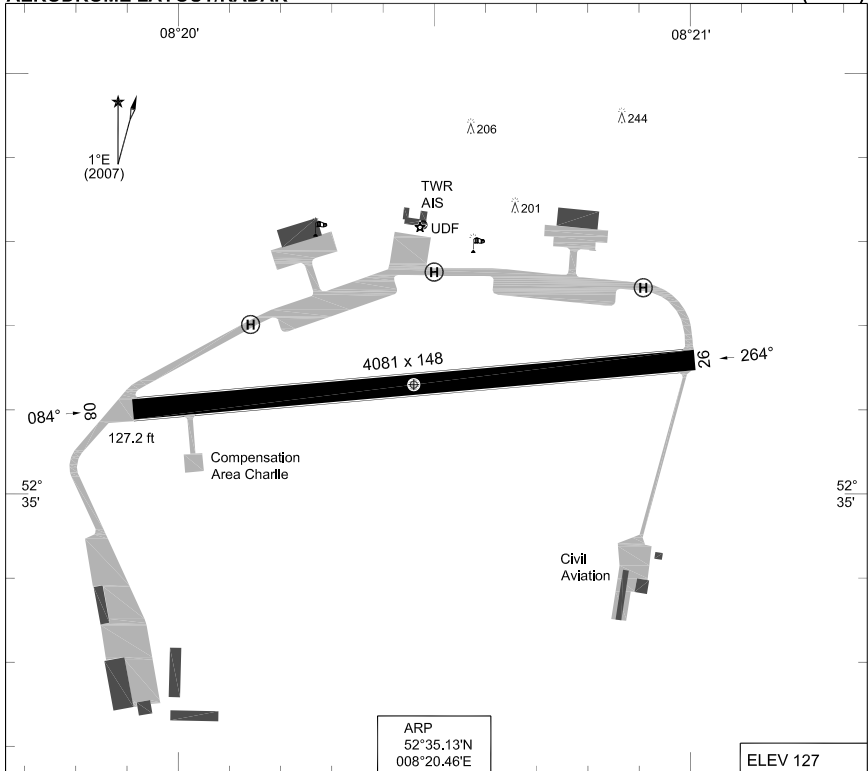


**MIPS
AERODROME LAYOUT/RADAR**

DIEPHOLZ (ETND)



ARP
52°35.13'N
008°20.46'E

ELEV 127

RWY	LCN	TORA	ASDA	TODA	LDA		TDZE	THR PSN
08	120	4081	4081	4081	4081		127	52°35.10'N 008°19.91'E
26	120	4081	4081	4081	4081		126	52°35.16'N 008°21.01'E

DIEPHOLZ TWR 379.300 140.600

	RWY	GS	TCH	OTCH	RPI	CAT	MINIMA
CIR						A	540 - 1.6 413 (500-1.6)
						B	680 - 1.6 553 (600-1.6)
						C	1010 - 4.4 883 (900-4.4)

CHANGE: LAYOUT (39, 227/10)

AFSBw 26 AUG 2010

AERODROME LAYOUT/RADAR

DIEPHOLZ (ETND)

MIPS INSTRUMENT APPROACH CHART

**NDB RWY 26
DIEPHOLZ (ETND)**

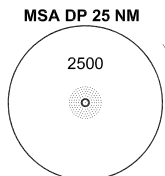
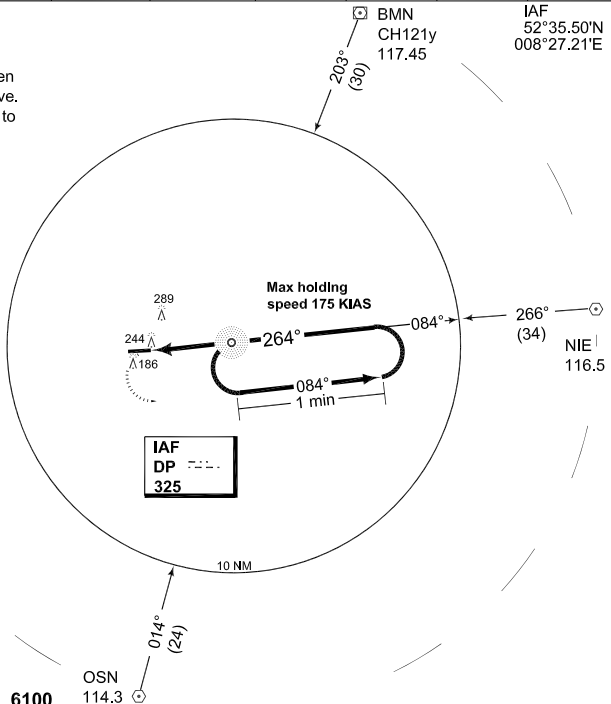
AD ELEV 127

BREMEN RADAR 372.550 125.025		DIEPHOLZ TWR 379.300 140.600							
NDB DP 325	APP COURSE 264°	FAF ALT 1550	Descent GR 5.97%/3.4°	MDA 530	TDZE 126	ALS-Length 2559	LDA 4081		

NOTE:

- a) Circling not authorized N of RWY 26/08.
- b) Procedure not authorized when night low flying system is active.
- c) Holding and racetrack limited to 175kt IAS maximum.

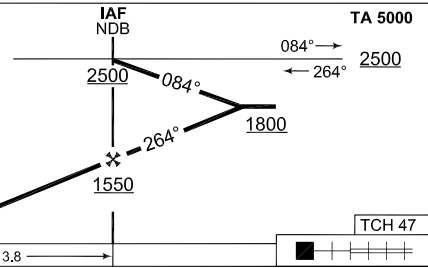
IAF
52°35.50'N
008°27.21'E



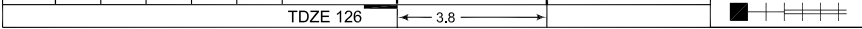
EMERG SAFE ALT 100 NM 6100

MISSED APPROACH

Left turn climbing to 2500 ft and rehome NDB. Missed approach turn limited to 160 kt IAS max.



NDB: MAP at THR					
NDB to MAP 3.8 NM					
Knots	60	90	120	150	180
Min:Sec	3:48	2:32	1:54	1:31	1:16



CATEGORY	A	B	C
NDB 26	530 - 0.8 404 (500-0.8/1.6)	530 - 1.2 404 (500-1.2/2.0)	
CIRCLING	540 - 1.6 413 (500-1.6)	680 - 1.6 553 (600-1.6)	1010 - 4.4 883 (900-4.4)

NDB RWY 26

52°35.13'N
008°20.46'E

DIEPHOLZ (ETND)

CHANGE: ALS (39/10)

AFSBw 26 AUG 2010

**MIPS
INSTRUMENT APPROACH CHART**

**COPTER NDB RWY 26
DIEPHOLZ (ETND)**

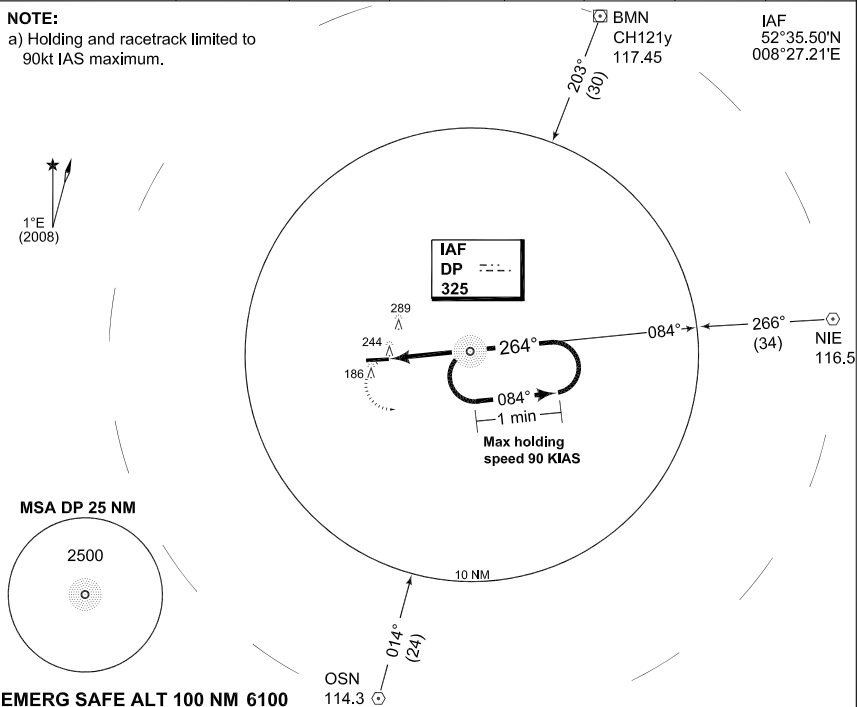
AD ELEV 127

BREMEN RADAR 372.550 125.025		DIEPHOLZ TWR 379.300 140.600						
NDB DP 325	APP COURSE 264°	FAF ALT 1550	Descent GR 5.97%/3.4°	MDA 530	TDZE 126	ALS-Length 2559	LDA 4081	

NOTE:

a) Holding and racetrack limited to 90kt IAS maximum.

IAF
52°35.50'N
008°27.21'E

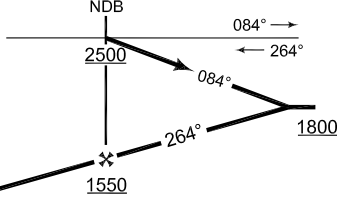


EMERG SAFE ALT 100 NM 6100

MISSED APPROACH

Left turn climbing to 2500 ft and rehome DP NDB.

IAF NDB TA 5000



CHANGE: ALS (09/10)

NDB: MAP at THR					
NDB to MAP 3.8 NM					
Knots	60	90	120	150	180
Min:Sec	3:48	2:32	1:54	1:31	1:16

TDZE 126

3.8

TCH 47

CATEGORY	COPTER
H-NDB 264°	530 - 0.4 404 (500-0.4/0.8)

COPTER NDB RWY 26

52°35.13'N
008°20.46'E

DIEPHOLZ (ETND)

AFSBW 26 AUG 2010