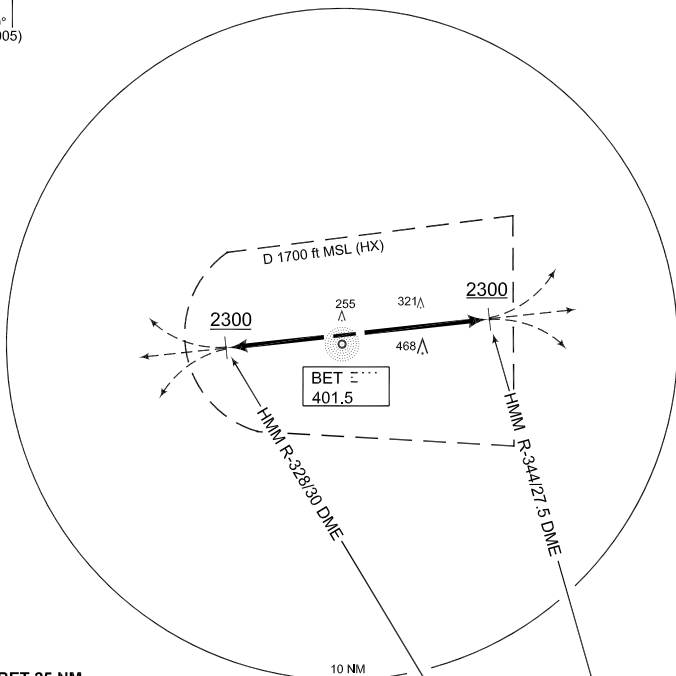


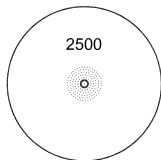
**TERPS
INSTRUMENT DEPARTURE CHART**

**HE 109 - 127
RHEINE - BENTLAGE (ETHE)**

BENTLAGE TWR 254.700 122.100		BENTLAGE RADAR 398.700 140.750 123.300			BREMEN RADAR 372.550 125.025			
AD ELEV 129	RWY 09	Knots V/V (fpm)	60 544	120 1088	180 1632	240 2176	to 2300 ft	Reason ATC
	27	V/V (fpm)	543	1086	1629	2172	2300 ft	ATC



MSA BET 25 NM



HMM CH103Y
115.65

EMERG SAFE ALT 100 NM 4200

TA 5000

HE 109 (RWY 09)	<ul style="list-style-type: none"> - Climb straight ahead to 2300 ft MSL - Reach 2300 ft MSL within 4 NM (HMM R-344/27,5 DME) - Continue as cleared by ATC
HE 127 (RWY 27)	<ul style="list-style-type: none"> - Climb straight ahead to 2300 ft MSL - Reach 2300 ft MSL within 4 NM (HMM R-328/30 DME) - Continue as cleared by ATC

CHANGE: EDITORIAL (164/10)

AFSBw 01 JUL 2010

HE 109 - 127

52°17.47'N
007°23.22'E

RHEINE - BENTLAGE (ETHE)