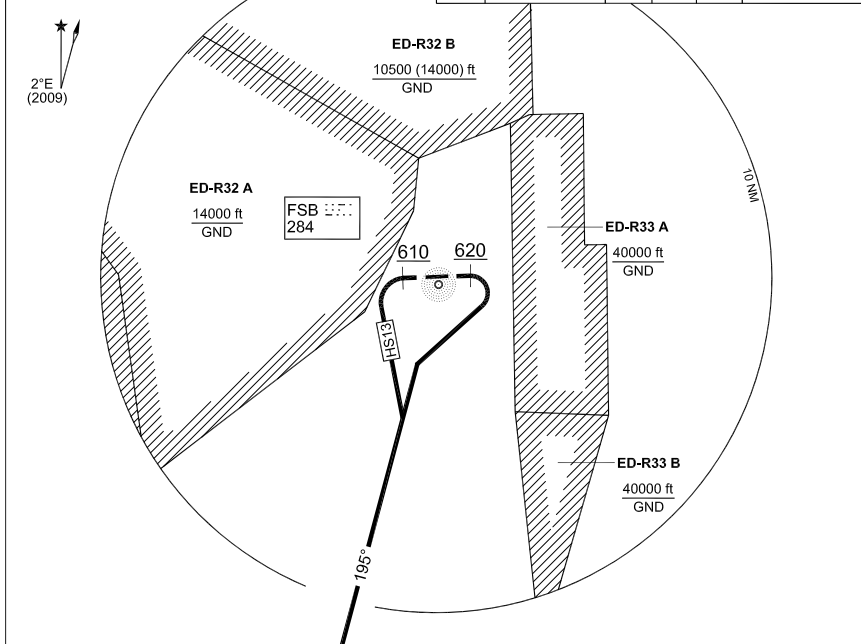


**MIPS
INSTRUMENT DEPARTURE CHART**

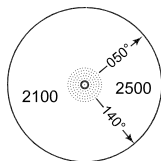
**HS 13 - 33
FASSBERG (ETHS)**

FASSBERG TWR 338.075 141.700		FASSBERG RADAR 379.075 122.425		BREMEN RADAR 259.725 131.325			
AD ELEV 245		RWY	from - to	60	90	120	Reason
		09	DER - 2000 ft	425	637	850	ATC/OBST
		27	DER - 2000 ft	400	600	800	ATC/OBST



PROCEDURES FOR HELICOPTER ONLY

MSA FSB 25 NM



CEL 311

EMERG SAFE ALT 100 NM 6100

TA 5000

HS 13 (RWY 27)	- Climb on track 266° until passing 610 ft MSL - When passing 610 ft MSL turn left to intercept FSB QDR 195° outbound to CEL INITIAL CLIMB ALTITUDE: 4000 ft
HS 33 (RWY 09)	- Climb on track 086° until passing 620 ft MSL - When passing 620 ft MSL turn right to intercept FSB QDR 195° outbound to CEL INITIAL CLIMB ALTITUDE: 4000 ft

CHANGE: EDITORIAL (164/10)

AFSBw 01 JUL 2010

HS 13 - 33

52°55.16'N
010°11.03'E

FASSBERG (ETHS)

**MIPS
INSTRUMENT DEPARTURE CHART**

**HS 14 - 34
FASSBERG (ETHS)**

FASSBERG TWR 338.075 141.700		FASSBERG RADAR 379.075 122.425		BREMEN RADAR 259.725 131.325			
AD ELEV 245	RWY 09	from - to DER - 5000 ft	60 425	90 637	120 850	Reason ATC/OBST	
	27	DER - 5000 ft	400	600	800	ATC/OBST	



LBE CH98X
115.1

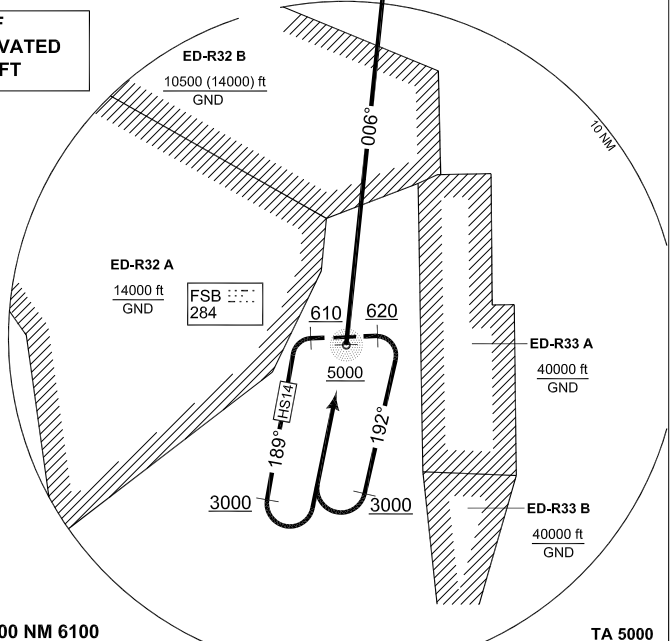
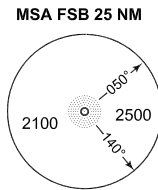
R-139

LBE 37

UGLOM
53°10.76'N
010°14.98'E

PROCEDURES FOR HELICOPTER ONLY

**ONLY USEABLE IF
ED-R 32 B IS ACTIVATED
NOT ABOVE 4500 FT**



EMERG SAFE ALT 100 NM 6100

TA 5000

HS 14 (RWY 27)	<ul style="list-style-type: none"> - Climb on track 266° - When passing 610ft turn left to track 189° - When passing 3000 ft turn left inbound FSB, pass FSB at 5000 ft or above - Proceed from FSB outbound on FSB QDR 006° to UGLOM (LBE R-139/37 DME) <p>NOTE: No turn before passing displaced THR 09</p>
HS 34 (RWY 09)	<p>RADAR MONITORED ONLY</p> <ul style="list-style-type: none"> - Climb on track 086° - When passing 620ft turn right to track 192° - When passing 3000 ft turn right inbound FSB, pass FSB at 5000 ft or above - Proceed from FSB outbound on FSB QDR 006° to UGLOM (LBE R-139/37 DME)

CHANGE: EDITORIAL (164/10)

AFSBw 01 JUL 2010

HS 14 - 34

52°55.16'N
010°11.03'E

FASSBERG (ETHS)