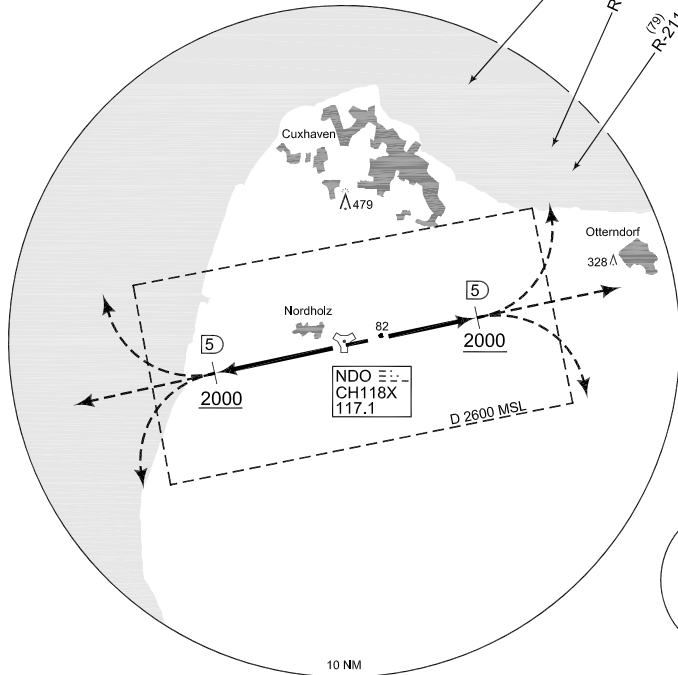
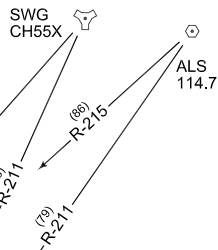


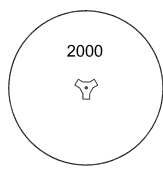
**TERPS
OPERATIONAL INSTRUMENT DEPARTURE CHART**

**MN 108 - 126
NORDHOLZ (ETMN)**

NORDHOLZ TWR 315.700	NORDHOLZ RADAR 278.350 129.850	BREMEN RADAR 313.225							
	AD ELEV 74	RWY	60	120	180	240	300	360	to
		08	468	936	1404	1872	2340	2808	2000 ft
		26	430	860	1290	1720	2150	2580	2000 ft



MSA NDO 25 NM



TA 5000

EMERG SAFE ALT 100 NM 2700

- | | |
|--------------------|--|
| MN 108
(RWY 08) | <ul style="list-style-type: none"> - Climb on heading 080° up to 2000 ft - Pass 2000 ft within NDO/5 DME - Continue as cleared by ATC |
| MN 126
(RWY 26) | <ul style="list-style-type: none"> - Climb on heading 260° up to 2000 ft - Pass 2000 ft within NDO/5 DME - Continue as cleared by ATC |

CHANGE: EDITORIAL (142/10 164/10 179/10)

AFSBw 01 JUL 2010

MN 108 - 126

53°46.06'N
008°39.51'E

NORDHOLZ (ETMN)