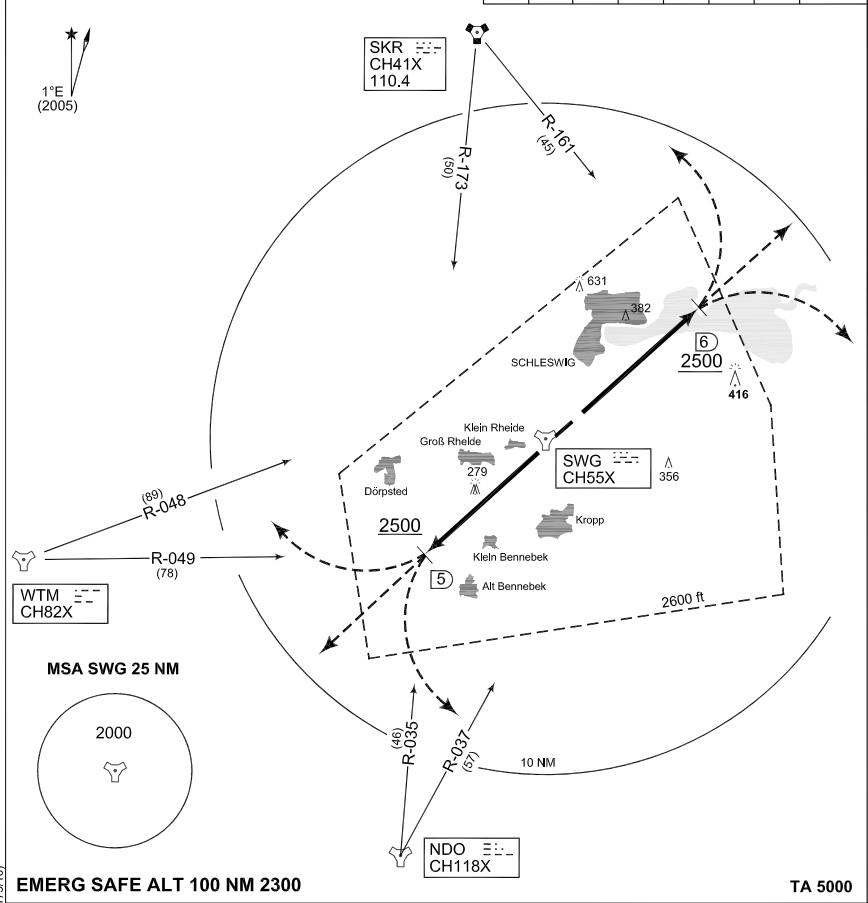


**TERPS  
OPERATIONAL INSTRUMENT DEPARTURE CHART**

**NS 105 - 123  
SCHLESWIG (ETNS)**

SCHLESWIG TWR 358.900	SCHLESWIG RADAR 244.450	BREMEN RADAR 371.750							
AD ELEV <b>70</b>		RWY	60	120	180	240	300	360	to
		<b>05</b>	516	1032	1548	2064	2580	3096	<b>2500 ft</b>
		<b>23</b>	493	986	1479	1972	2465	2958	<b>2500 ft</b>



**EMERG SAFE ALT 100 NM 2300**

**TA 5000**

NS 105 (RWY 05)	- Climb straight ahead to 2500 ft - Continue as cleared by ATC CLIMBOUT RESTRICTION: Reach 2500 ft within 6 DME
NS 123 (RWY 23)	- Climb straight ahead to 2500 ft - Continue as cleared by ATC CLIMBOUT RESTRICTION: Reach 2500 ft within 5 DME

CHANGE: EDITORIAL (142/10 164/10 179/10)

AFSBw 01 JUL 2010

**NS 105 - 123**

54°27.56'N  
009°30.98'E

**SCHLESWIG (ETNS)**