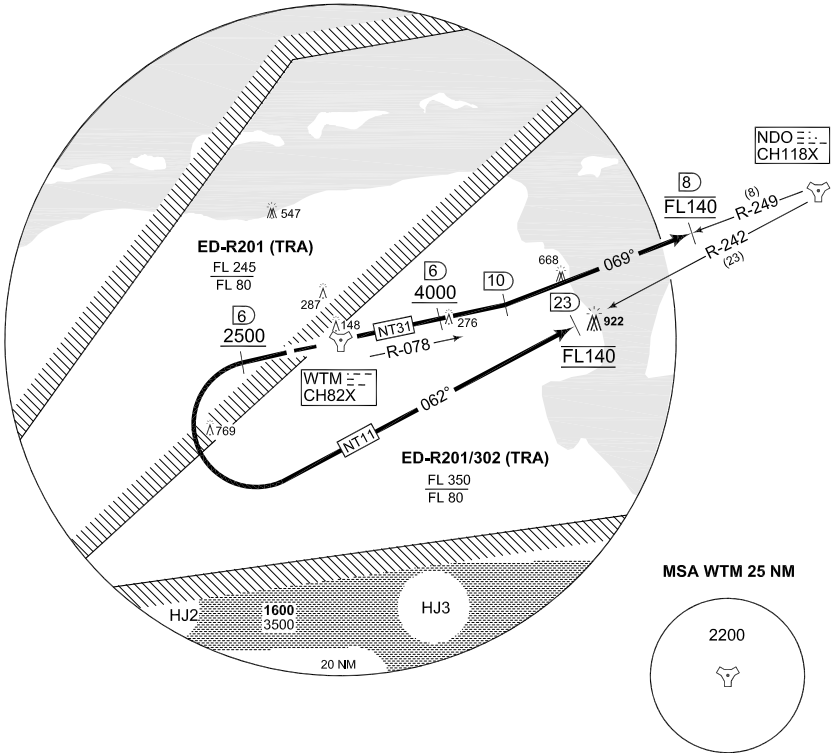


**TERPS  
INSTRUMENT DEPARTURE CHART**

**NT 11 - 31  
WITTMUNDHAFEN (ETNT)**

WITTMUND TWR 386.875 122.100		WITTMUND RADAR 248.050 123.300				BREMEN RADAR 313.225 124.075			
AD ELEV <b>26</b>	RWY	Knots	120	180	240	300	360	to	
	<b>26</b>	V/V (fpm)	480	720	960	1200	1440	<b>1300 ft</b>	
	<b>08</b>	V/V (fpm)	426	639	852	1065	1278	<b>100 ft</b>	



**TA 5000**

**EMERG SAFE ALT 100 NM 2700**

NT 11 (RWY 26) (42)	<ul style="list-style-type: none"> <li>- Climb straight ahead to WTM/6 DME, pass 6 DME at 2500 ft or above</li> <li>- Turn left to intercept NDO R-242 inbound</li> <li>- Proceed to NDO R-242/23 DME, pass 23 DME at FL 140 or as cleared by ATC</li> </ul>
NT 31 (RWY 08) (29)	<ul style="list-style-type: none"> <li>- Climb straight ahead inbound WTM</li> <li>- Proceed on WTM R-078 to 10 DME, pass 6 DME at 4000 ft or above</li> <li>- At WTM R-078/10 DME turn left to intercept NDO R-249 inbound</li> <li>- Proceed to NDO R-249/8 DME, pass 8 DME at FL 140 or as cleared by ATC</li> </ul>

CHANGE: EDITORIAL (142/10, 164/10, 179/10)

AFSBw 01 JUL 2010

**NT 11 - 31**

53°32.87'N  
007°04.04'E

**WITTMUNDHAFEN (ETNT)**

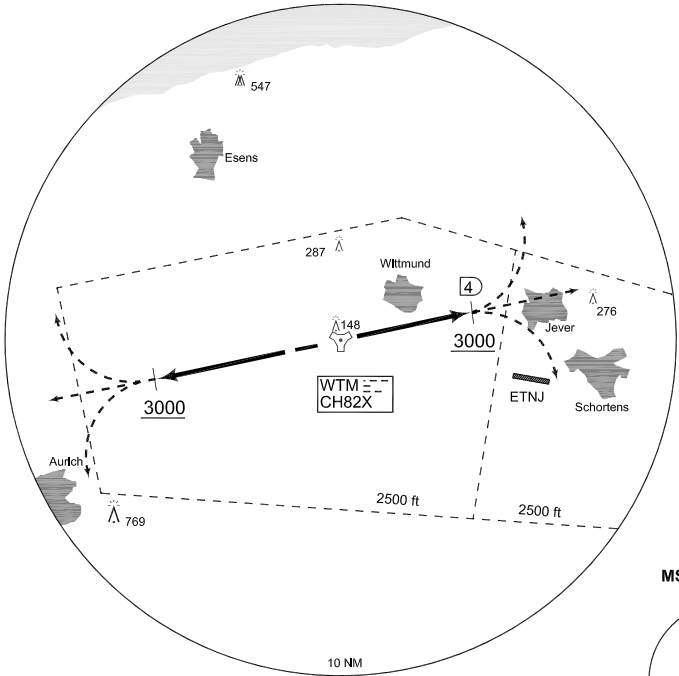
**MIPS**  
**OPERATIONAL INSTRUMENT DEPARTURE CHART**

**NT 108 - 126**  
**WITTMUNDHAFEN (ETNT)**

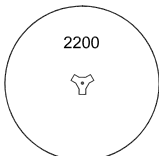
WITTMUND TWR 386.875 118.725		WITTMUND RADAR 248.050 123.600				BREMEN RADAR 313.225 124.025			
AD ELEV <b>26</b>	RWY <b>26</b>	From - to DER - 3000 ft	60 698	120 1396	180 2094	240 2792	300 3490	360 4188	Reason <b>ATC</b>
	<b>08</b>	DER - 3000 ft	545	1090	1635	2180	2725	3270	<b>ATC</b>

NDO  
CH118X  


1°E  
(2008)  

**MSA WTM 25 NM**



**NT108 (RWY 08) FOR HOMEBASED AIRCRAFT ONLY**

**TA 5000**

**EMERG SAFE ALT 100 NM 2700**

NT 108 (RWY 08)  
- Climb straight ahead to WTM/4 DME  
- Continue as cleared by ATC  
CLIMBOUT RESTRICTION: Reach 3000 ft within 4DME

NT 126 (RWY 26)  
- Climb straight until passing 3000 ft MSL  
- Continue as cleared by ATC  
CLIMBOUT RESTRICTION: Reach 3000 ft within 7 DME  
Departure limited to 300 KIAS (556 km/h) maximum

CHANGE: EDITORIAL (135/10 142/10 164/10 179/10)

AFSBw 01 JUL 2010

**NT 108 - 126**

53°32.87'N  
007°40.04'E

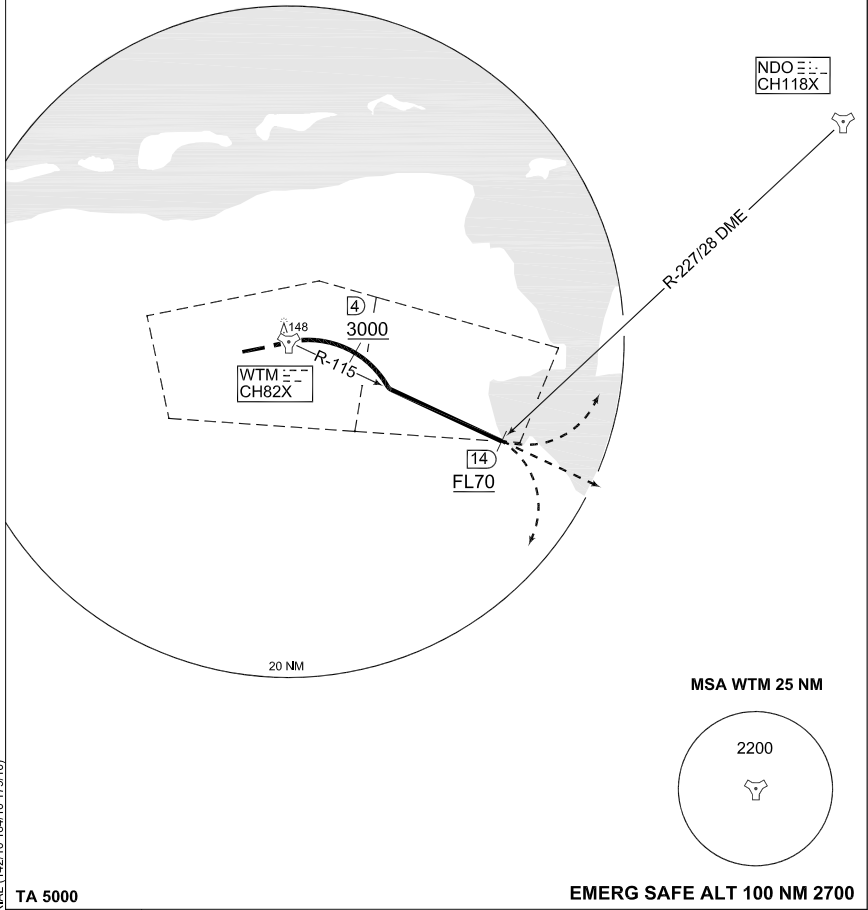
**WITTMUNDHAFEN (ETNT)**

**MIPS  
INSTRUMENT DEPARTURE CHART**

**NT 208  
WITTMUNDHAFEN (ETNT)**

WITTMUND TWR 386.875 122.100		WITTMUND RADAR 248.050 123.300				BREMEN RADAR 313.225 124.075			
AD ELEV <b>26</b>	RWY <b>08</b>	From - To	60	120	180	240	300	360	Reason
	<b>08</b>	<b>DER - 3000 ft</b>	545	1090	1635	2180	2725	3270	ATC
	<b>08</b>	<b>3000 ft - FL70</b>	400	800	1200	1600	2000	2400	ATC

0°  
(2005)



CHANGE: EDITORIAL (142/10, 164/10, 179/10)

**TA 5000**

**EMERG SAFE ALT 100 NM 2700**

NT 208  
(RWY 08)

- CLIMBOUT RESTRICTION: Pass WTM/4 DME at 3000 ft or above**
- Climb straight ahead to WTM
  - At WTM turn right to intercept WTM R-115
  - Pass WTM R-115/14 DME at FL070 or as cleared by ATC

AFSBw 01 JUL 2010

**NT 208**

53°32.87'N  
007°40.04'E

**WITTMUNDHAFEN (ETNT)**