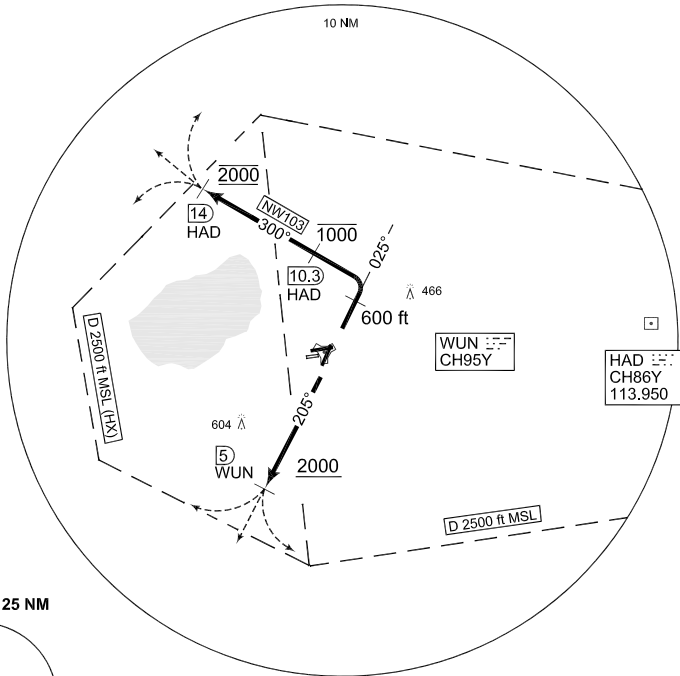


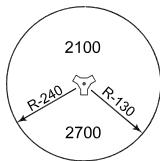
MIPS
OPERATIONAL INSTRUMENT DEPARTURE CHART

NW 103 - 121
WUNSTORF (ETNW)

WUNSTORF TWR 282.000 138.600		WUNSTORF RADAR 389.400 123.300				BREMEN RADAR 259.725 131.325			
AD ELEV 187	RWY	From - to	60	120	180	240	300	360	Reason
	03	1000ft-2000ft	262	524					ATC
	21	DER - 2000ft	407	814	1221	1628	2035	2442	ATC



MSA WUN 25 NM



EMERG SAFE ALT 100 NM 6100

TA 5000

NW 103 (RWY 03)	<p>NOTE: NW103 restricted to CAT A and B only Departure turn limited to Max KIAS 150</p> <ul style="list-style-type: none"> - After takeoff climb on track 025° - When passing 600 ft turn left to track 300° - Pass HAD/10.3 DME not above 1000 ft - Pass HAD/14 DME at 2000 ft - Proceed as cleared by ATC
--------------------	---

NW 121 (RWY 21)	<p>NOTE: NW121 restricted to CAT A-D only</p> <ul style="list-style-type: none"> - After takeoff climb on track 205° to WUN/5 DME - Pass WUN/5 DME at 2000 ft or above - Continue as cleared by ATC
--------------------	--

CHANGE: EDITORIAL (142/10, 164/10, 179/10)

AFSBw 01 JUL 2010

NW 103 - 121

52°27.44'N
009°25.63'E

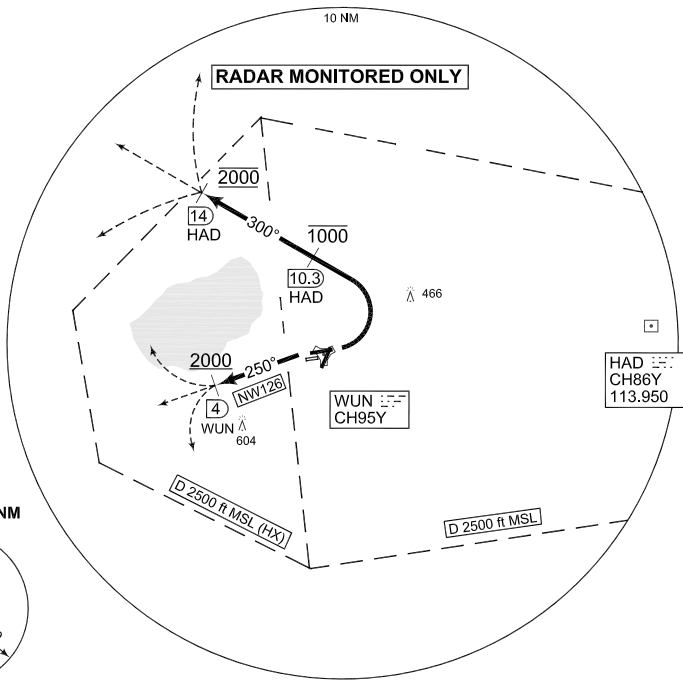
WUNSTORF (ETNW)

MIPS
OPERATIONAL INSTRUMENT DEPARTURE CHART

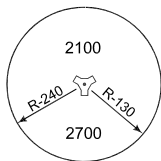
NW 108 - 126
WUNSTORF (ETNW)

WUNSTORF TWR 282.000 138.600		WUNSTORF RADAR 389.400 142.500				BREMEN RADAR 259.725 131.325			
AD ELEV	RWY	From - to	60	120	180	240	300	360	Reason
187	08	DER - 600ft	608	1216					ATC
		1000- 2000ft	334	668					ATC
	26	DER - 2000ft	523	1046	1569	2092	2615	3138	ATC

NOTE:
NW108
TORA limited to 6000 ft



MSA WUN 25 NM



EMERG SAFE ALT 100 NM 6100

TA 5000

NW 108 (RWY 08)	Departure turn limited to MAX 130 KIAS - After take-off turn left to track 300° - Pass HAD/10.3 DME at or below 1000 ft - Pass HAD/14 DME at 2000 ft - Proceed as cleared by ATC
NW 126 (RWY 26)	- After takeoff climb on track 250° until passing WUN/4 DME - Pass WUN/4 DME not below 2000 ft - Proceed as cleared by ATC

CHANGE: EDITORIAL (142/10 164/10 179/10)

AFSBw 01 JUL 2010

NW 108 - 126

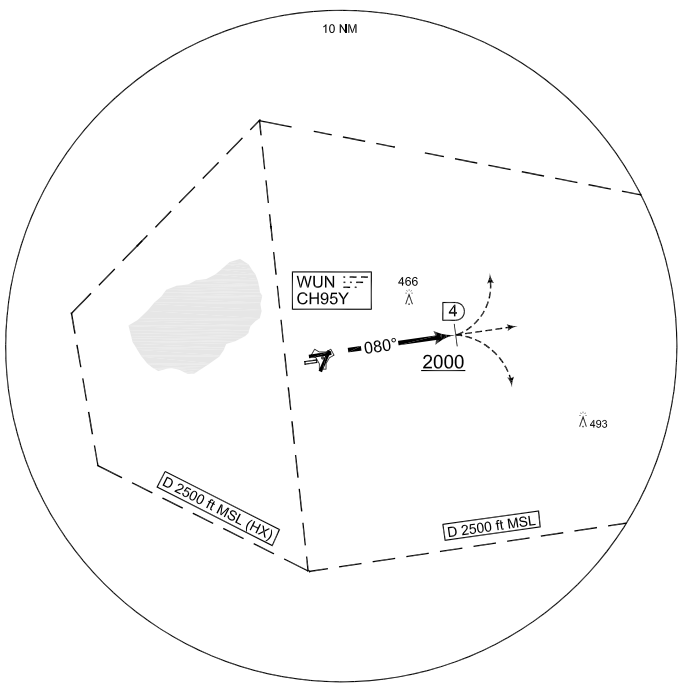
52°27.44'N
009°25.63'E

WUNSTORF (ETNW)

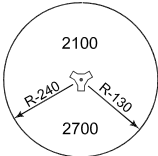
MIPS
OPERATIONAL INSTRUMENT DEPARTURE CHART

NW 208
WUNSTORF (ETNW)

WUNSTORF TWR 282.000 138.600		WUNSTORF RADAR 389.400 142.500				BREMEN RADAR 259.725 131.325					
AD ELEV 187	RWY 08	Knots V/V (fpm)	60	120	180	240	300	360	to		
			570	1140	1710	2280	2850	3420	2000 ft		



MSA WUN 25 NM



EMERG SAFE ALT 100 NM 6100

TA 5000

NW 208
(RWY 08)

- After takeoff climb on track 080° until passing WUN/4 DME
- Pass WUN/4 DME not below 2000 ft
- Proceed as cleared by ATC

CHANGE: EDITORIAL (142/10 164/10 179/10)

AFSBw 01 JUL 2010

NW 208

52°27.44'N
009°25.63'E

WUNSTORF (ETNW)