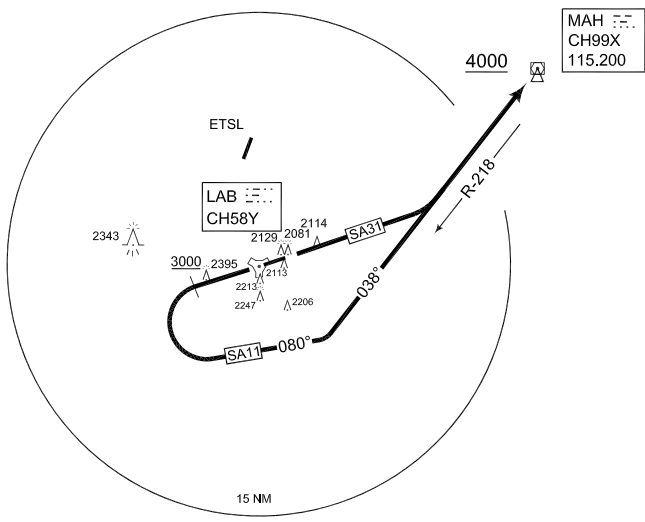


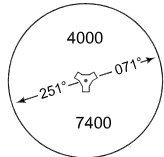
**PANS-OPS
INSTRUMENT DEPARTURE CHART**

**SA 11 - 31
LANDSBERG/LECH (ETSA)**

LANDSBERG TWR 315.700 140.075 122.100			LANDSBERG RADAR 278.900 309.200 123.300			MÜNCHEN RADAR 259.000 129.450			AD ELEV 2044	
RWY	from - to	60	90	120	180	240	300	360	Reason	
07	DER - 3500 ft	262	393	524	786	1048	1310	1572	ATC	
25	DER - 4000 ft	262	393	524	786	1048	1310	1572	ATC	



MSA LAB 25 NM



EMERG SAFE ALT 100 NM 15300

TA 5000

SA 11 (RWY 25)	<ul style="list-style-type: none"> - Climb straight ahead until passing 3000 ft - Turn left on track 080° to intercept MAH R-218 inbound - Pass MAH at 4000 ft or above <p>NOTE:</p> <ul style="list-style-type: none"> - Max KIAS 220 until established on MAH R-218 - No turn before DER - HIRTA sensitive ACFT check your limitations
SA 31 (RWY 07)	<ul style="list-style-type: none"> - Climb straight ahead until intercepting MAH R-218 inbound - Cross MAH at 4000 ft or above - Max KIAS 220 until established on MAH R-218
SA 11 - 31	<ul style="list-style-type: none"> - INITIAL CLIMB: 4000 ft

CHANGE: EDITORIAL (164/10)

AFSBw 01 JUL 2010

SA 11 - 31

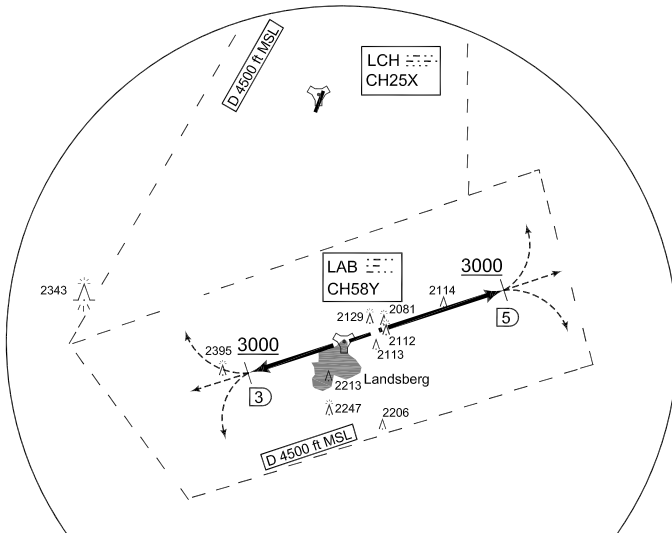
48°04.23'N
010°54.36'E

LANDSBERG/LECH (ETSA)

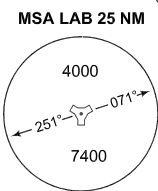
**PANS-OPS
OPERATIONAL INSTRUMENT DEPARTURE CHART**

**SA 107 - 125
LANDSBERG/LECH (ETSA)**

LANDSBERG TWR 315.700 140.075 122.100			LANDSBERG RADAR 278.900 309.200 123.300			MÜNCHEN RADAR 259.000 129.450			AD ELEV 2044	
RWY	from - to	60	90	120	180	240	300	360	Reason	
07	DER - 3500 ft	262	393	524	786	1048	1310	1572	ATC	
25	DER - 4000 ft	262	393	524	786	1048	1310	1572	ATC	



**NOTE SA 107/ SA 125
FOR NON TACAN EQUIPPED ACFT
climb straight ahead to alt 3000 ft than proceed
according to ACC**



EMERG SAFE ALT 100 NM 15300 **TA 5000**

SA 107 (RWY 07)	<ul style="list-style-type: none"> - Climb straight ahead until LAB/5 DME - Pass LAB/5 DME at 3000 ft or above - Proceed as cleared by ATC
SA 125 (RWY 25)	<ul style="list-style-type: none"> - Climb straight ahead until LAB/3 DME - Pass LAB/3 DME at 3000 ft or above - Proceed as cleared by ATC <p>NOTE:</p> <ul style="list-style-type: none"> - HIRTA sensitive ACFT check your limitations

CHANGE: EDITORIAL (164/10)

AFSBw 01 JUL 2010