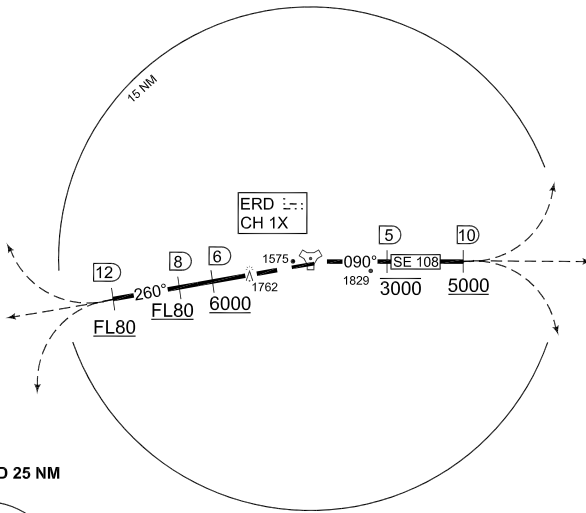


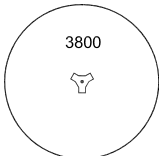
**PANS-OPS
INSTRUMENT DEPARTURE CHART**

**SE 108 - 126
ERDING (ETSE)**

ERDING TWR 369.450 122.100 120.200				MÜNCHEN RADAR 259.550 127.950							
AD ELEV 1515	RWY 08	From - to 3000 - 5000	60	120	180	240	300	360	Reason ATC		
	26	DER - FL80	910	1820	2730	3640	4550	5460	ATC		



MSA ERD 25 NM



EMERG SAFE ALT 100 NM 14600

TA 5000

SE 108 (RWY 08)	<ul style="list-style-type: none"> - Climb on track 090° - Pass ERD/5 DME at 3000 ft or below - Pass ERD/10 DME at 5000 ft or above - Continue as cleared by ATC
SE 126 (RWY 26)	<ul style="list-style-type: none"> - Climb on track 260° until ERD/12 DME - Pass ERD/6 DME at 6000 ft or above - Pass ERD/8 DME at FL80 or above - Pass ERD/12 DME at FL80 or above - Continue as cleared by ATC

CHANGE: VARIATION (164/10 189/10)

AFSBw 01 JUL 2010

SE 108 - 126

48°19.34'N
011°56.92'E

ERDING (ETSE)