

**PANS - OPS
OPERATIONAL INSTRUMENT DEPARTURE CHART**

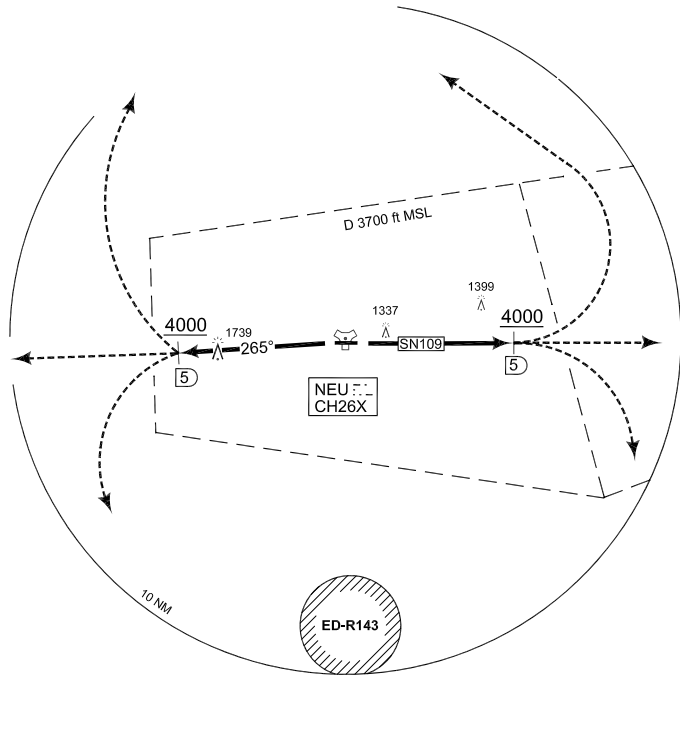
**SN 109 - 127
NEUBURG (ETSN)**

DONAU TWR 369.100 129.850		DONAU RADAR 275.650 130.150		MÜNCHEN RADAR 242.200 VHF O/R				
AD ELEV 1250	RWY	From - to	120	180	240	300	360	REASON
	09	DER - 4000 ft	658	1316	1974	2632	3290	ATC
	27	DER - 4000 ft	627	1254	1881	2508	3135	ATC

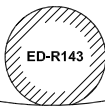
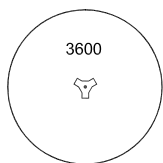


NOBRU
48°58.13'N
011°06.15'E
NEU R-342/
16 DME

DONIX
48°41.58'N
010°45.28'E
NEU R-267/
18 DME



MSA NEU 25 NM



EMERG SAFE ALT 100 NM 13500 **TA 5000**

SN 109 (RWY 09) - Climb straight ahead to NEU/5 DME
- Pass NEU/5 DME at 4000 ft or above
- Continue as cleared by ATC

SN 127 (RWY 27) - No turn before DER
- Climb on track 265° to NEU/5 DME
- Pass NEU/5 DME at 4000 ft or above
- Continue as cleared by ATC

CHANGE: EDITORIAL (16/4/10)

AFSBw 01 JUL 2010

SN 109 - 127

48°42.66'N
011°12.69'E

NEUBURG (ETSN)