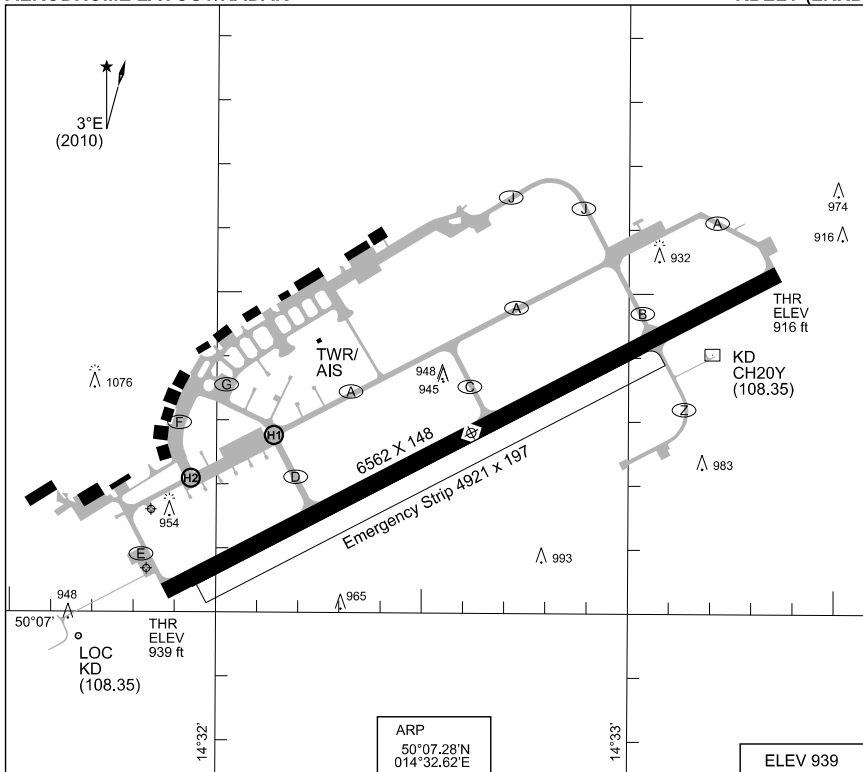


**PANS-OPS
AERODROME LAYOUT/RADAR**

KBELY (LKKB)



RWY	PCN	TORA	ASDA	TODA	LDA	PAPI	TDZE	THR PSN
06	23	6562	6562	7087	6562	3.0°		50°07.03'N 014°31.88'E
24	F/C/W/T	6562	6562	7874	6562	3.0°		50°07.53'N 014°33.36'E

KBELY TWR 120.875 126.475 x
 KBELY PRECISION 126.750 123.300 x 315,000 x
 KBELY APP 124.675 279,000 x

	RWY	GS	TCH	OTCH	RPI	CAT	MINIMA
PAR	24	3.0°				A B C D	DH (200) / RVR 800 / 1000 DH (200) / RVR 900 / 1100

CHANGE: VAR

MIL-AIS ATC Prague 26 AUG 2010

AERODROME LAYOUT/RADAR

KBELY (LKKB)

**PANS-OPS
INSTRUMENT APPROACH CHART**

AD ELEV 939

**ILS-DME RWY 24
KBELY (LKKB)**

KBELY APPROACH		KBELY PRECISION			KBELY TWR			
124.675	279.000x	126.750	123.300x	315.000x	120.875	126.475x		
LOC-DME		APP COURSE	GP INTCPT ALT	GS	DA	THR ELEV	ALS	LDA
KD 108.35/CH20Y		239°		3.0°	see CAT	916	2986	6562

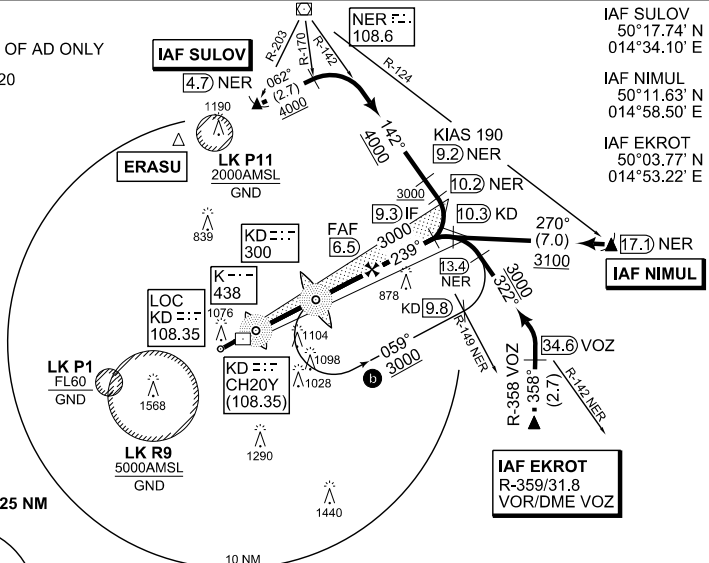
NOTE:

- Ⓐ CIRCLING S OF AD ONLY
- Ⓑ MAX KIAS 220

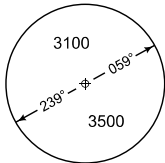
IAF SULOV
50°17.74' N
014°34.10' E

IAF NIMUL
50°11.63' N
014°58.50' E

IAF EKROT
50°03.77' N
014°53.22' E



MSA ARP LKKB 25 NM



MISSED APPROACH

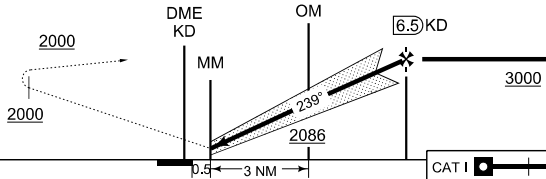
Climb to 2000 ft max. 2.7 NM DME KD, turn left intercept R-095 OKL then climb to 3100 ft, continue to EKROT

MISSED APPROACH TURN:

MAX 230 KIAS
to 185 KIAS min, bank angle 15°
to 230 KIAS min, bank angle 20°

		FAF to MAP 5.8 NM				
Knots		60	90	120	150	180
Min:Sec		5:49	3:53	2:55	2:20	1:57

TA 5000



GP 3.0°

ILS RDH 51.5

THR ELEV 916

CAT I

CHANGE: PROCEDURES, VAR

CATEGORY	A	B	C	D
OCA (OCH)	MINIMA RELATED TO THR RWY 24			
ILS	1115 (197)	1119 (200)	1128 (210)	1138 (220)
GP INOP	1224 (296)			
Ⓐ CIRCLING	1345	1656	1971	-

ILS-DME RWY 24

50°07.28' N
014°32.62' E

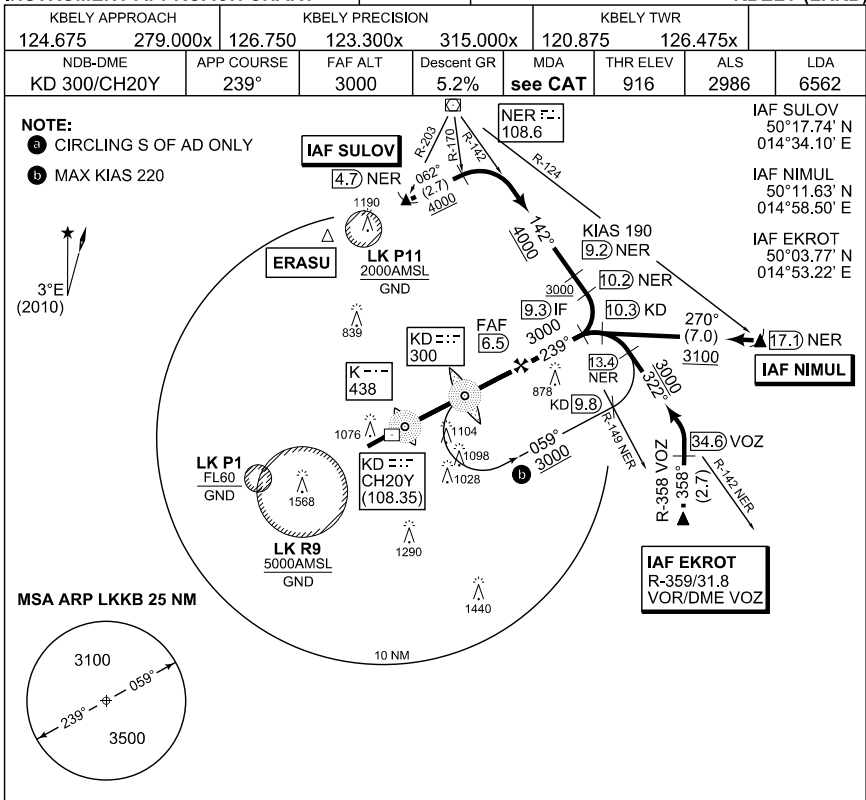
KBELY (LKKB)

MIL-AIS ATC Prague 26 AUG 2010

**PANS-OPS
INSTRUMENT APPROACH CHART**

AD ELEV 939

**NDB-DME RWY 24
KBELY (LKKB)**



MISSED APPROACH

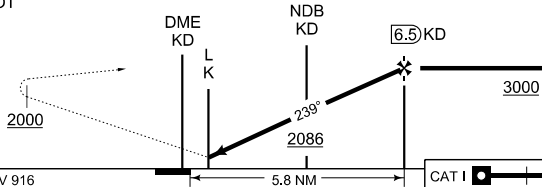
Climb to 2000 ft max. 2.7 NM DME KD, turn left intercept R-095 OKL then climb to 3100 ft, continue to EKROT

MISSED APPROACH TURN:

MAX 230 KIAS
to 185 KIAS min, bank angle 15°
to 230 KIAS min, bank angle 20°

		FAF to MAP 5.8 NM			
Knots	60	90	120	150	180
Min:Sec	5:49	3:53	2:55	2:20	1:57

TA 5000



CHANGE: PROCEDURES, VAR

MIL AIS ATC Prague 26 AUG 2010

CATEGORY	A	B	C	D
OCA (OCH)	MINIMA RELATED TO THR RWY 24			
NDB-DME	1214 (296)			1312 (394)
Ⓐ CIRCLING	1345	1656	1971	-
PAR	1155 (239)			

NDB-DME RWY 24

50°07.28' N
014°32.62' E

KBELY (LKKB)