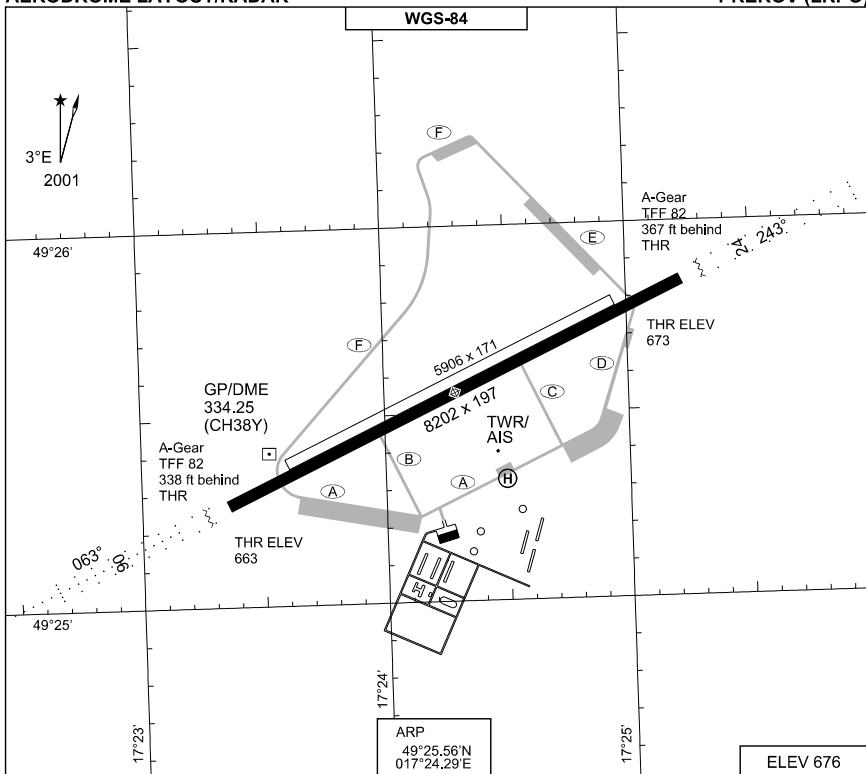


PANS-OPS
AERODROME LAYOUT/RADAR

PŘEROV (LKPO)



RWY	PCN	TORA	ASDA	TODA	LDA	ASI	ALS	TDZE	THR PSN
06	19	8202	8202	9121	8202	P 3.0°	-		49°25.29'N 017°23.36'E
24	R/C/W/T	8202	8202	9088	8202	P 3.0°	3117		49°25.83'N 017°25.23'E

PŘEROV TWR 119.750 118.825 x
 PŘEROV PRECISION 293.825 123.300 x
 PŘEROV APP 127.775 265.800 x

RWY	GS	TCH	OTCH	RPI	CAT	MINIMA

CHANGE: EDITORIAL

MIL-AIS ATC Prague 6 MAY 2010

AERODROME LAYOUT/RADAR

PŘEROV (LKPO)

**PANS-OPS
INSTRUMENT APPROACH CHART**

AD ELEV 676

**ILS-DME RWY 06
PREROV (LKPO)**

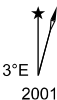
PREROV APPROACH 127.775 265.800x		PREROV PRECISION 293.825 123.300x		PREROV TWR 119.750 118.825x		
LOC-DME CK 110.15/CH38Y	APP COURSE 063°	GS INTCP ALT	GS 3.0°	DA see CAT	THR ELEV 663	LDA 8202

CAUTION:

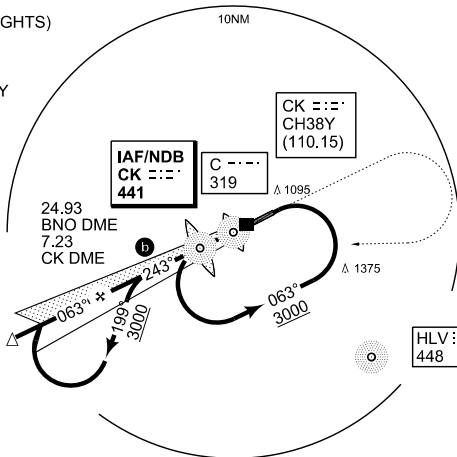
NON-STANDARD ALS (RED LIGHTS)

NOTE:

- a CIRCLING S OF AD ONLY
- b CAT A, B : 1 MIN 45 SEC
CAT C, D: 45 SEC



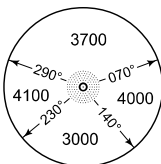
IAF VANIV
R-053/20.60
BNO DME
11.52 CK DME



IAF VANIV
R-053/20.60
DME BNO
11.52 CK DME
017°07.48' E

IAF CK NDB
49°24.42' N
017°20.35' E

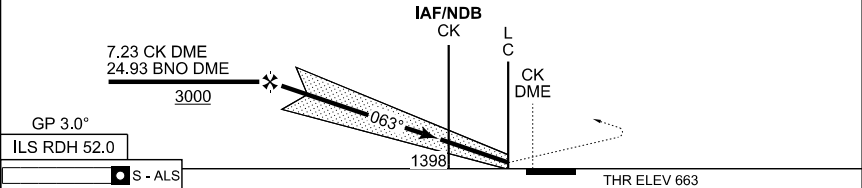
MSA C L 25 NM



MISSED APPROACH

Climb to 2000 ft, turn right to CK NDB, climb to 3000 ft.

	FAF to MAP 6.54 NM					TA 5000
Knots	60	90	120	150	180	
Min:Sec	6:32	4:22	3:16	2:37	2:11	



CHANGE: CAUTION

CATEGORY	A	B	C	D	E
OCA (OCH)	MINIMA RELATED TO THR RWY 06				
ILS-DME	852 (189)	864 (201)	872 (209)	882 (219)	922 (259)
LOC only	968 (305)				983 (320)
a CIRCLING	1391 (728)		1778 (1115)		2120 (1457)

ILS-DME RWY 06

49°25.56' N
017°24.29' E

PREROV (LKPO)

MIL AIS ATC Prague 6 MAY 2010

**PANS-OPS
INSTRUMENT APPROACH CHART**

AD ELEV 676

**NDB-DME (GPS) RWY 06
PŘEROV (LKPO)**

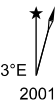
PŘEROV APPROACH 127.775 265.800x		PŘEROV PRECISION 293.825 123.300x		PŘEROV TWR 119.750 118.825x			
NDB-DME CK 441/CH38Y	APP COURSE 063°	FAF ALT 3000	Descent GR 5.2%	MDA 994	THR ELEV 663	LDA 8202	

CAUTION:

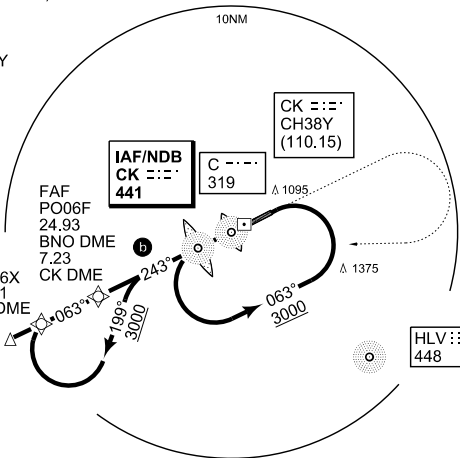
NON-STANDARD ALS (RED LIGHTS)

NOTE:

- a** CIRCLING S OF AD ONLY
- b** CAT A, B : 1 MIN 45 SEC
CAT C, D: 45 SEC

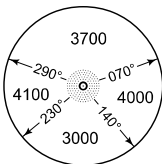


IAF VANIV
R-053/20.60
BNO DME
11.52 CK DME



IAF VANIV
R-053/20.60
DME BNO
11.52 CK DME
49°20.65' N
017°07.48' E
IAF CK NDB
49°24.42' N
017°20.35' E
PO06X
49°21.28' N
017°09.60' E
PO06F
49°22.42' N
017°13.51' E

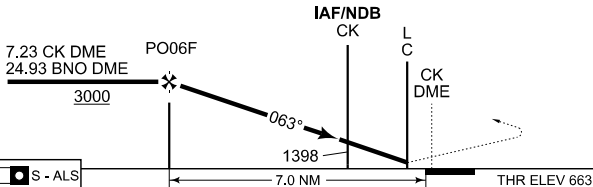
MSA C L 25 NM



MISSED APPROACH

Climb to 2000 ft, turn right to CK NDB, climb to 3000 ft.

	FAF to MAP 6.54 NM					TA 5000
Knots	60	90	120	150	180	
Min:Sec	6:32	4:22	3:16	2:37	2:11	



S - ALS

CATEGORY	A	B	C	D	E
OCA (OCH)	MINIMA RELATED TO THR RWY 06				
NDB-DME	994 (331)				
DME CK not received	1127 (464)				
a CIRCLING	1391 (728)	1778 (1115)		2120 (1457)	
PAR	994 (331)				

CHANGE: CAUTION

MIL AIS ATC Prague 6 MAY 2010

NDB-DME (GPS) RWY 06

49°25.56' N
017°24.29' E

PŘEROV (LKPO)

**PANS-OPS
INSTRUMENT APPROACH CHART**

**NDB (GPS) RWY 06
PŘEROV (LKPO)**

AD ELEV 676

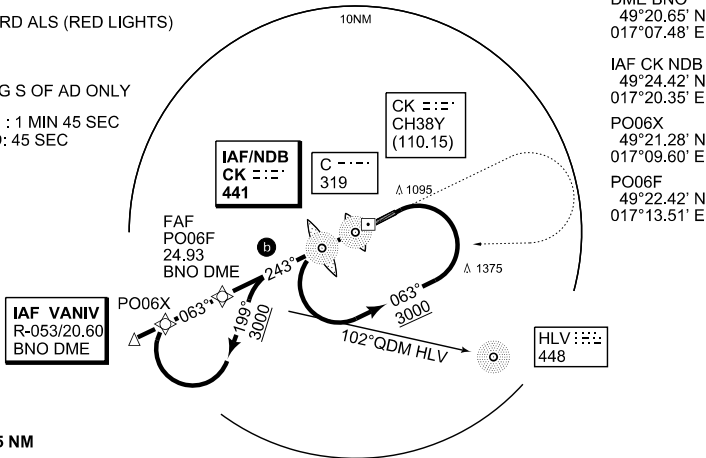
PŘEROV APPROACH 127.775 265.800x		PŘEROV PRECISION 293.825 123.300x		PŘEROV TWR 119.750 118.825x			
NDB CK 441	APP COURSE 063°	FAF ALT	Descent GR 5.2%	MDA 994	THR ELEV 663		LDA 8202

CAUTION:

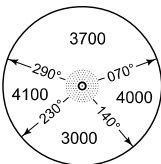
NON-STANDARD ALS (RED LIGHTS)

NOTE:

- a CIRCLING S OF AD ONLY
- b CAT A, B : 1 MIN 45 SEC
CAT C, D: 45 SEC



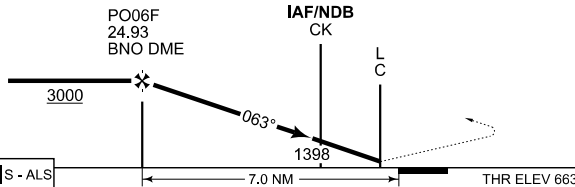
MSA C L 25 NM



MISSED APPROACH

Climb to 2000 ft, turn right to CK NDB, climb to 3000 ft.

	FAF to MAP 6.54 NM					TA 5000
Knots	60	90	120	150	180	
Min:Sec	6:32	4:22	3:16	2:37	2:11	



CATEGORY	A	B	C	D	E
OCA (OCH)	MINIMA RELATED TO THR RWY 06				
NDB-DME	994 (331)				
NDB CK not received	1398 (735)				
a CIRCLING	1391 (728)		1778 (1115)		2120 (1457)
PAR	994 (331)				

CHANGE: CAUTION

MIL AIS ATC Prague 6 MAY 2010

NDB (GPS) RWY 06

49°25.56' N
017°24.29' E

PŘEROV (LKPO)