

**PANS-OPS
INSTRUMENT DEPARTURE CHART**

AD ELEV 794

**BEKVI 1X - 1Y
CASLAV (LKCV)**

| | | | | | |
|-----------------|----------|------------------|----------|------------|----------|
| CASLAV APPROACH | | CASLAV PRECISION | | CASLAV TWR | |
| 123.675 | 308.875x | 283.600 | 123.300x | 133.000 | 118.250x |



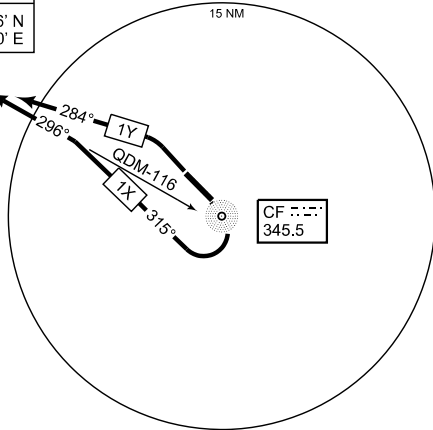
OKL ~~ELEV~~
CH73X
112.6

GOLIN
50°03.56' N
014°59.10' E

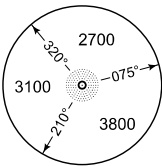
BEKVI
50°04.40' N
014°43.34' E

CF ~~ELEV~~
345.5

R-092
(18)



MSA CF NDB 25 NM



TA 5000

| | |
|----------------------|---|
| BEKVI 1X (RWY 14) | <ul style="list-style-type: none"> - Straight ahead to CF NDB - After passing CF NDB turn right track 315° to QDM 116 CF NDB - Turn left track 296° to GOLIN - To BEKVI (R-092 OKL) |
| BEKVI 1Y (RWY 32) | <ul style="list-style-type: none"> - Straight ahead (315) - At 4.0 CF DME turn left track 284° to GOLIN - To BEKVI (R-092 OKL) |

CHANGE: EDITORIAL

ML- AIS ATC Prague 26 AUG 2010

BEKVI 1X - 1Y

49°56.37' N
015°22.92' E

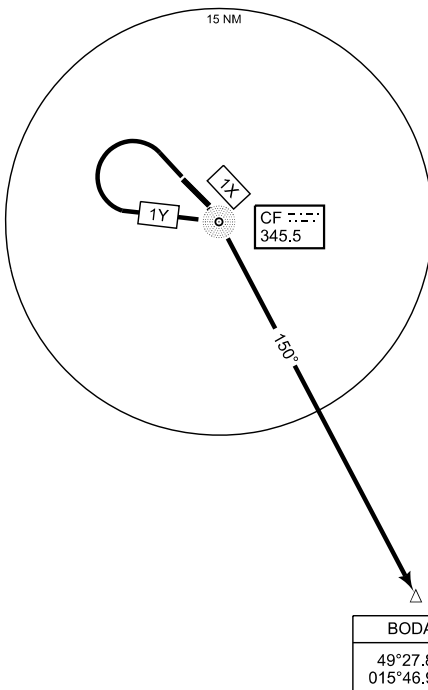
CASLAV (LKCV)

**PANS-OPS
INSTRUMENT DEPARTURE CHART**

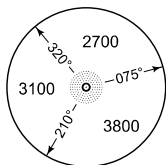
AD ELEV 794

**BODAL 1X - 1Y
CASLAV (LKCV)**

| | | | | | |
|-----------------|----------|------------------|----------|------------|----------|
| CASLAV APPROACH | | CASLAV PRECISION | | CASLAV TWR | |
| 123.675 | 308.875x | 283.600 | 123.300x | 133.000 | 118.250x |



MSA CF NDB 25 NM



TA 5000

CHANGE: EDITORIAL

| | |
|----------------------|---|
| BODAL 1X (RWY 14) | - Straight ahead to CF NDB - After passing CF NDB turn right track 150° to BODAL |
| BODAL 1Y (RWY 32) | - Straight ahead (315) - At 4.0 CF DME turn left CF NDB - After passing CF NDB turn right track 150° to BODAL |

MIL-AIS ATC Prague 26 AUG 2010

BODAL 1X - 1Y

49°56.37' N
015°22.92' E

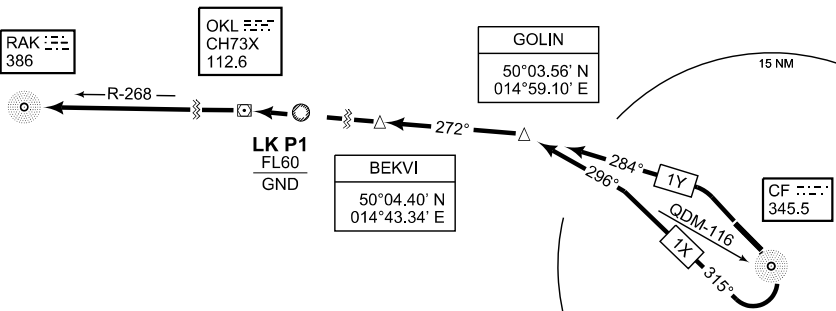
CASLAV (LKCV)

**PANS-OPS
INSTRUMENT DEPARTURE CHART**

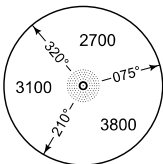
AD ELEV 794

**RAK 1X - 1Y
CASLAV (LKCV)**

| | | | | | |
|-----------------|----------|------------------|----------|------------|----------|
| CASLAV APPROACH | | CASLAV PRECISION | | CASLAV TWR | |
| 123.675 | 308.875x | 283.600 | 123.300x | 133.000 | 118.250x |



MSA CF NDB 25 NM



TA 5000

| | |
|--------------------|--|
| RAK 1X (RWY 14) | <ul style="list-style-type: none"> - Straight ahead to CF NDB - After passing CF NDB turn right track 315° to QDM 116 CF NDB - Turn left track 296° to GOLIN - Continue R-092 OKL to BEKVI - Continue R-092 OKL to OKL VOR/DME - Continue R-268 OKL to RAK NDB |
| RAK 1Y (RWY 32) | <ul style="list-style-type: none"> - Straight ahead (315) - At 4.0 CF DME turn left track 284° to GOLIN - Continue R-092 OKL to BEKVI - Continue R-092 OKL to OKL VOR/DME - Continue R-268 OKL to RAK NDB |

CHANGE: EDITORIAL

MIL-AIS ATC Prague 26 AUG 2010

RAK 1X - 1Y

49°56.37' N
015°22.92' E

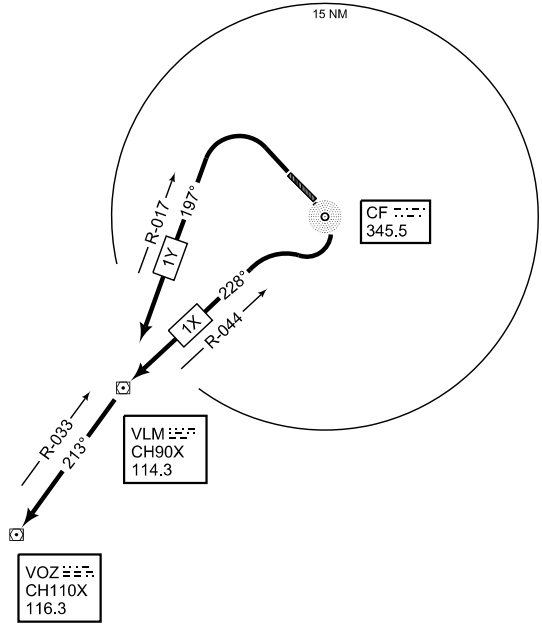
CASLAV (LKCV)

**PANS-OPS
INSTRUMENT DEPARTURE CHART**

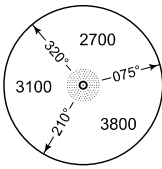
AD ELEV 794

**VOZ 1X - 1Y
CASLAV (LKCV)**

| | | | | | |
|-----------------|----------|------------------|----------|------------|----------|
| CASLAV APPROACH | | CASLAV PRECISION | | CASLAV TWR | |
| 123.675 | 308.875x | 283.600 | 123.300x | 133.000 | 118.250x |



MSA CF NDB 25 NM



TA 5000

| | |
|--------------------|--|
| VOZ 1X (RWY 14) | <ul style="list-style-type: none"> - Straight ahead to CF NDB - After passing CF NDB turn right R-044 VLM to VLM VOR/DME - Turn left R-033 VOZ to VOZ VOR/DME |
| VOZ 1Y (RWY 32) | <ul style="list-style-type: none"> - Straight ahead (315) - At 4.0 CF DME turn left R-017 VLM to VLM VOR/DME - Turn right R-033 VOZ to VOZ VOR/DME |

CHANGE: EDITORIAL

MIL-AIS ATC Prague 26 AUG 2010

VOZ 1X - 1Y

49°56.37' N
015°22.92' E

CASLAV (LKCV)