

**PANS-OPS  
INSTRUMENT DEPARTURE CHART**

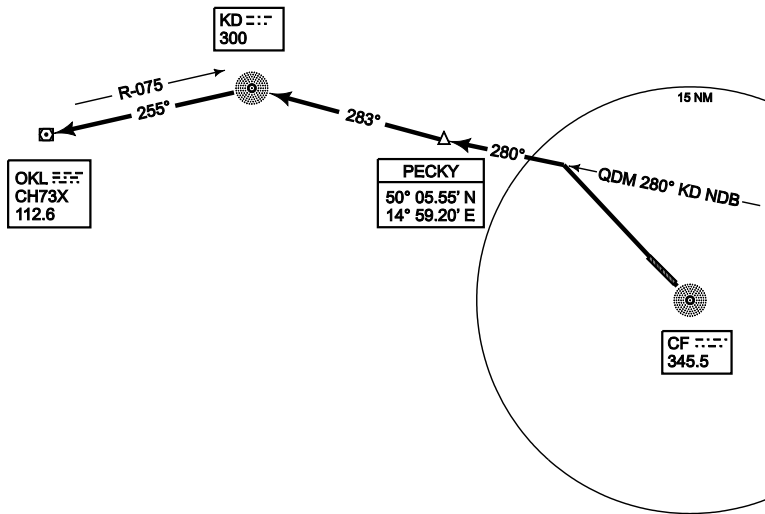
AD ELEV 794

**OKL 1Y  
ČÁSLAV (LKCV)**

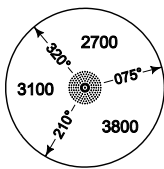
ČÁSLAV APPROACH 123.675 308.875x		ČÁSLAV PRECISION 283.600 123.300x		ČÁSLAV TWR 133.000 118.250x	
-------------------------------------	--	--------------------------------------	--	--------------------------------	--



ACCORDING TO PANS-OPS CRITERIA



**MSA CF NDB 25 NM**



TA 5000

CHANGE: ROUTE DESIGNATION

OKL 1Y  
(RWY 32)

- Straight ahead
- Turn left track 280° via PECKY to KD NDB
- Turn left track 255° to OKL VOR/DME ( R-075OKL )

**OKL 1Y**

49°56.37' N  
015°22.92' E

**ČÁSLAV (LKCV)**

MIL-AIS ATC Prague 16 FEB 2007