

**PANS-OPS  
INSTRUMENT DEPARTURE CHART**

**HC 12 - 32  
CELLE (ETHC)**

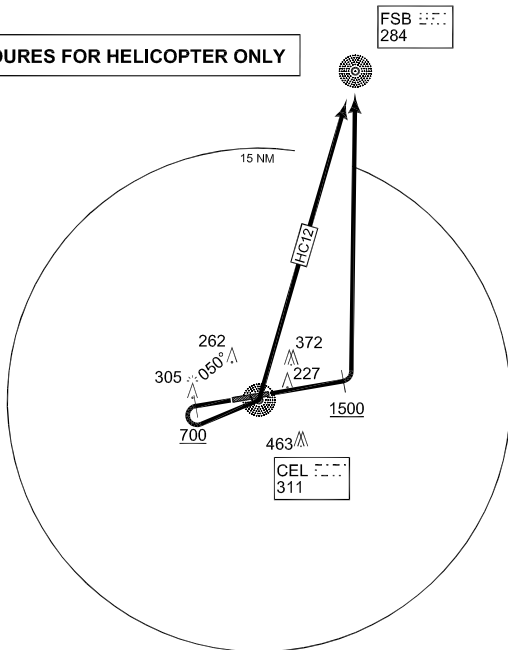
CELLE TWR  
281.900 122.100

AD ELEV  
**128**

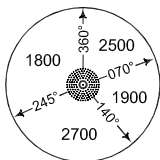
BREMEN RADAR  
259.725 131.325



**PROCEDURES FOR HELICOPTER ONLY**



**MSA CEL 25 NM**



**EMERG SAFE ALT 100 NM 5200**

**TA 5000**

CHANGE: PROCEDURES

AFSBw 07 JUN 2007

HC 12  
(RWY 26)

- Climb on RWY heading
  - When passing 700 ft , turn left to CEL
  - Cross CEL and proceed to FSB
- INITIAL CLIMB ALTITUDE: 3000 ft

HC 32  
(RWY 08)

- Climb on RWY heading
  - When passing 1500 ft , turn left to FSB
  - Proceed to FSB
- INITIAL CLIMB ALTITUDE: 3000 ft

**HC 12 - 32**

52°35.48'N  
010°01.33'E

**CELLE (ETHC)**