

**PANS-OPS
INSTRUMENT DEPARTURE CHART**

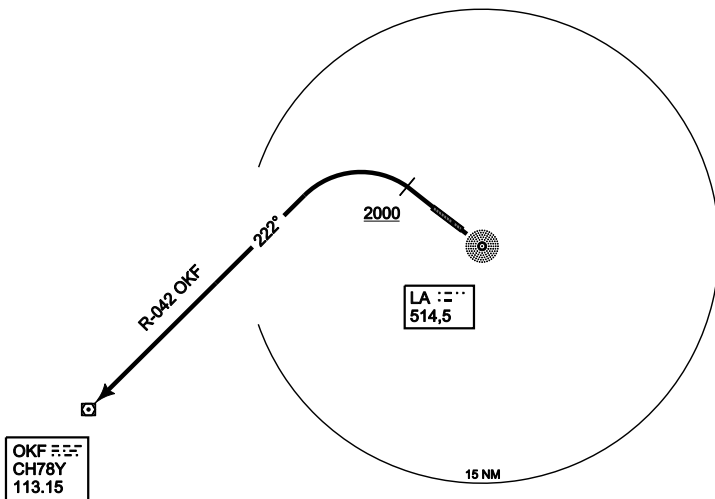
AD ELEV 1548

**OKF 2W
NÁMEŠŤ (LKNA)**

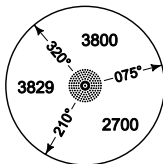
NÁMEŠŤ APPROACH		NÁMEŠŤ PRECISION		NÁMEŠŤ TWR	
118.150	266.200x	283.900	123.300x	126.250	121.850x



ACCORDING TO PANS-OPS CRITERIA



MSA LA NDB 25 NM



CHANGE: FREQUENCY

TA 5000

- | | |
|--------------------|---|
| OKF 2W
(RWY 31) | - Straight ahead
- At 2000 ft AMSL turn left track 222° to OKF VOR |
|--------------------|---|

OKF 2W

49°09.97' N
016°07.46' E

NÁMEŠŤ (LKNA)

MIL-AIS ATC Prague 10 APR 2008